

Rischio idraulico a valle - Talseitiges Hydraulisches Risiko



Diga: **Rio Pusteria**
 Staumauer **Mühlbach**
 N.Archivio: **387B** Nr. Archiv:

Piano di emergenza

DIRETTIVA DEL PRESIDENTE
 DEL CONSIGLIO DEI MINISTRI
 8 LUGLIO 2014

Notfallplan

RICHTLINIE DES PRÄSIDENTEN
 DES MINISTERRATES VOM
 8. JULI 2014






Scala-Masstab:
1:100.000



Carta operativa di rischio - Einsatzkarte

Versione Version	Data Datum	Elaborato Bearbeitet	Controllato Kontrolliert	Note Bemerkungen
1	30.06.2022	ML	RD	







Legenda - Legende

-  Invaso Rio Pusteria - Staubecken Mühlwald
-  Località - Ortschaft
-  Comuni interessati - Betroffene Gemeinden
-  Comuni - Gemeinden
-  Diga - Damm






Scenari - Szenarien

-  Scarichi di fondo - Grundablass







Mobilità - Mobilität

-  Ponti - Brücken
-  Cancelli rete ferroviaria - Sperren Schienen
-  Cancelli stradali A22 S.S. S.P. - Straßen Sperren A22 S.S. L.S.
-  Cancelli stradali S.C. - Straßen Sperren G.S.
-  Funivie - Seilbahnen
-  Ospedali - Krankenhäuser

Elementi vulnerabili - Vulnerable Elemente

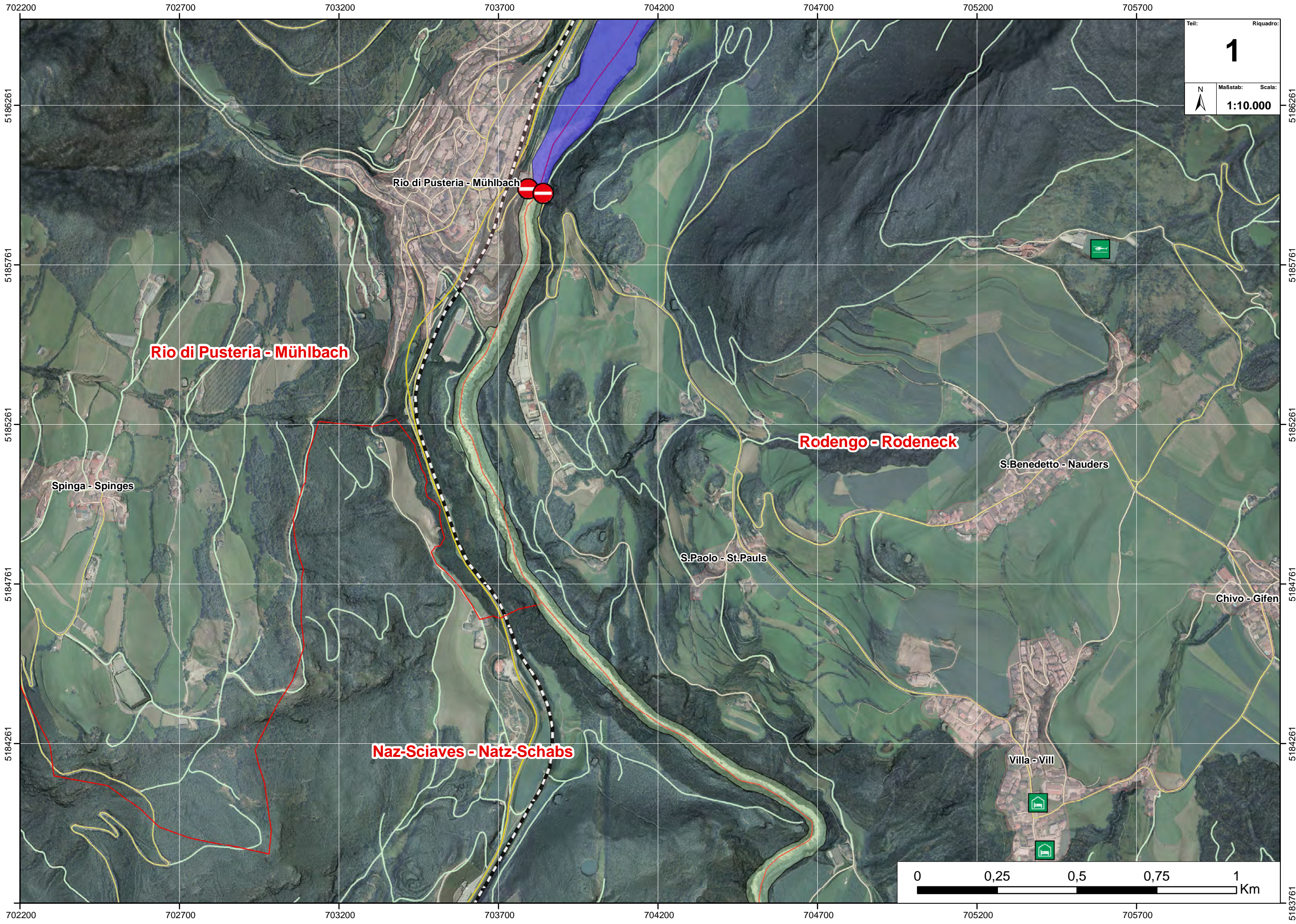
-  Distretto Sanitario - Gesundheitsprengel
-  Cooperativa frutticoltori - Obstgenossenschaft
-  Asili - Kindergärten
-  Scuole - Schulen
-  Case di riposo - Altersheime

Risorse fruibili - Ressourcen sicher

-  Area punto di raccolta - Sammelstellen
-  Elisuperfici di soccorso - Hubschrauberlandplätze
-  Aree di ammassamento per i soccorsi - Bereitstellungsräume
-  Aree di ammassamento animali domestici - Notunterkunft Haustiere
-  Aree o strutture di accoglienza ricovero - Notunterkünfte
-  COC - GLS

Rete viaria: strade e sentieri – Verkehrsnetz: Straßen und Wege

Ortofoto - Orthofoto 2020



Teil: **1** Riquadro:
Maßstab: 1:10.000
Scala:

Rio di Pusteria - Mühlbach

Rodengo - Rodeneck

Naz-Sciaves - Natz-Schabs

Spinga - Spinges

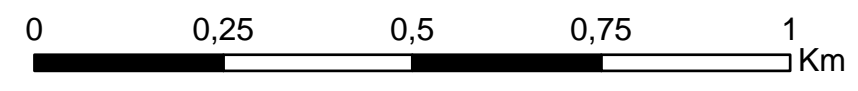
Rio di Pusteria - Mühlbach

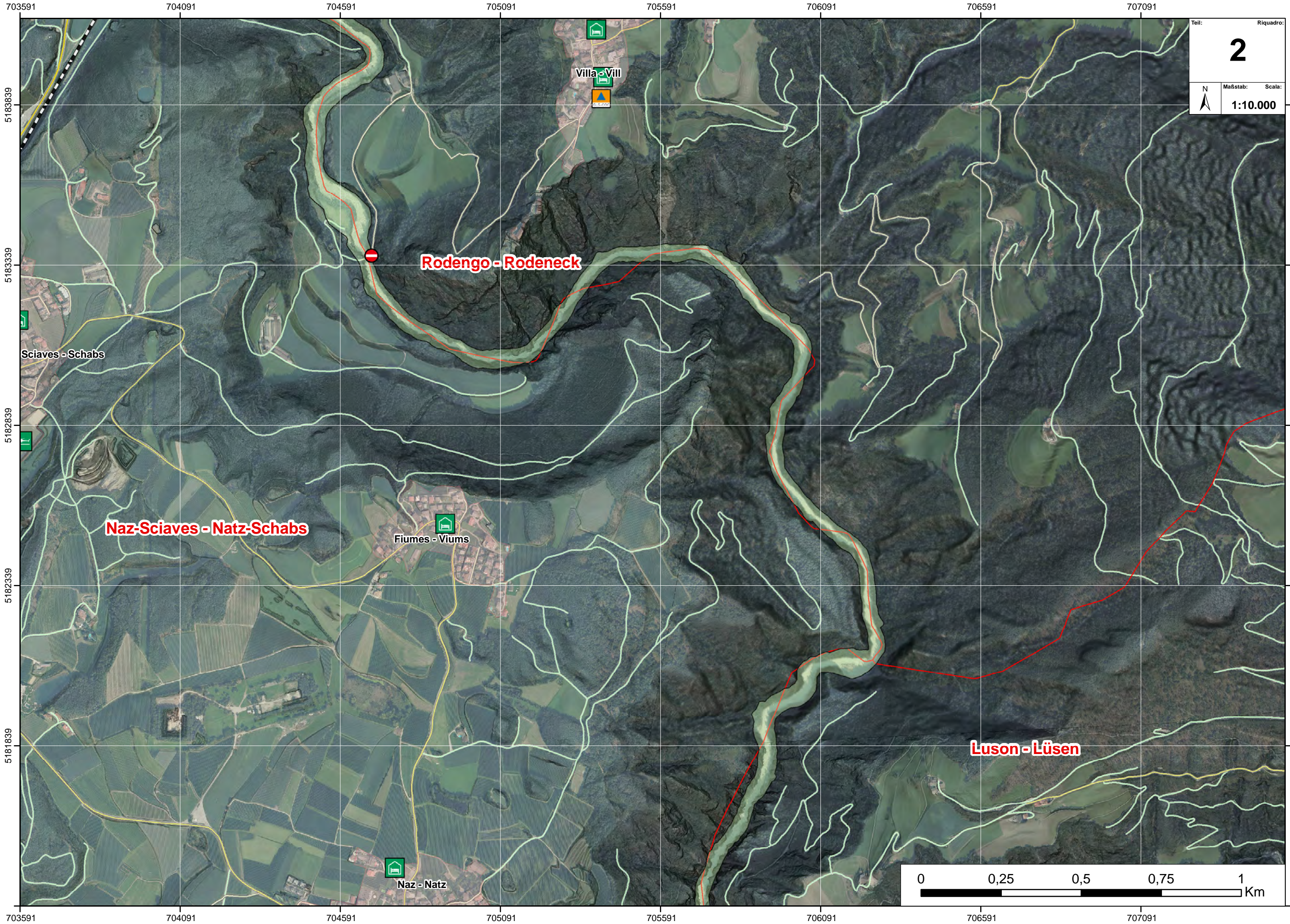
S. Paolo - St. Pauls

S. Benedetto - Nauders

Chivo - Gifen

Villa - Vill





Teil: Riquadro:
2
Maßstab: Scale:
1:10.000

Rodengo - Rodeneck

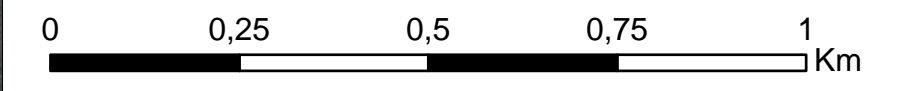
Sciaves - Schabs

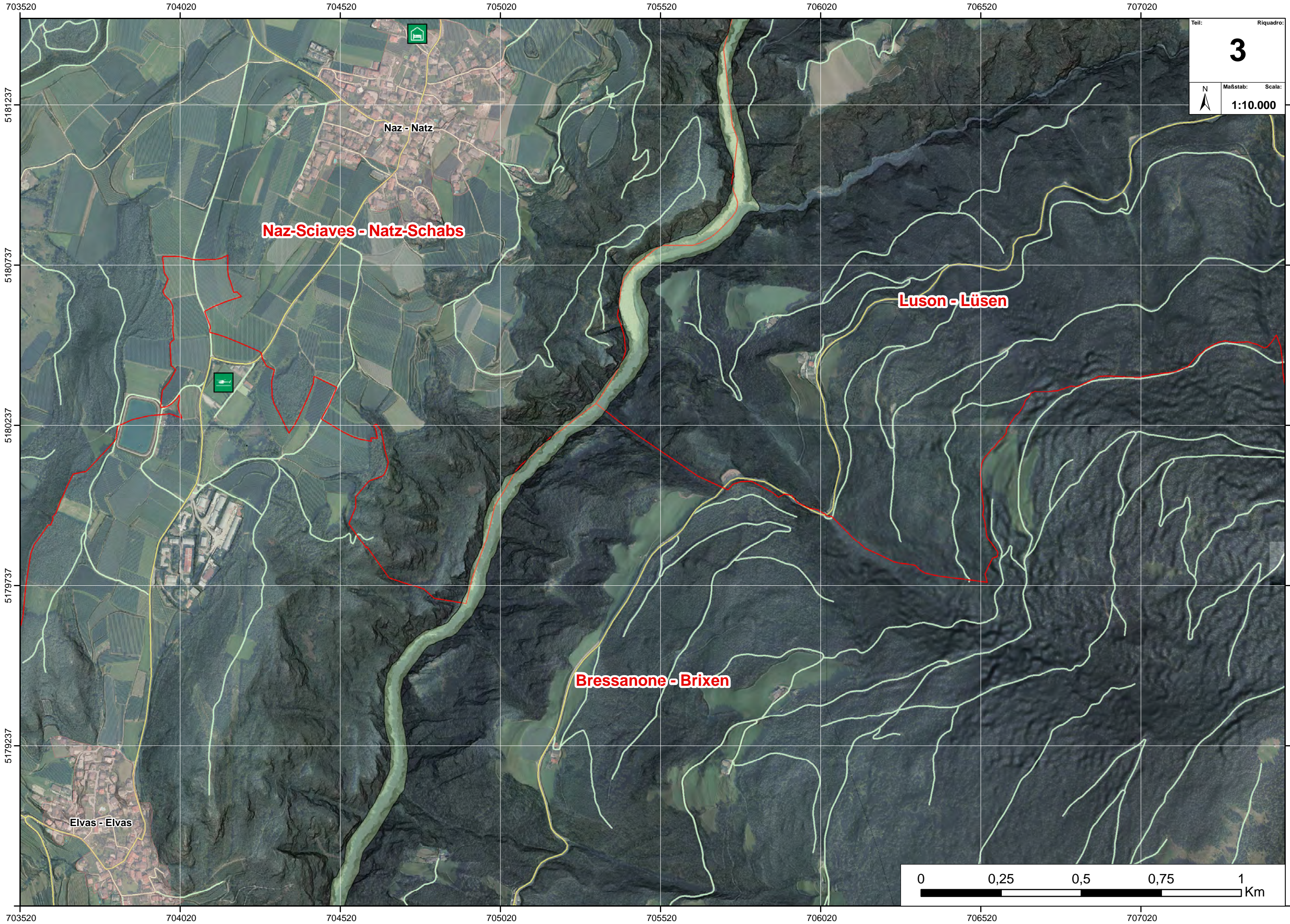
Naz-Sciaves - Natz-Schabs

Fiumes - Viums

Naz - Natz

Luson - Lüsen





Teil: Riquadro:
3
Maßstab: Scala:
1:10.000

0 0,25 0,5 0,75 1 Km

703520
5181237
5180737
5180237
5179737
5179237
703520

704020
5181237
5180737
5180237
5179737
5179237
704020

704520
5181237
5180737
5180237
5179737
5179237
704520

705020
5181237
5180737
5180237
5179737
5179237
705020

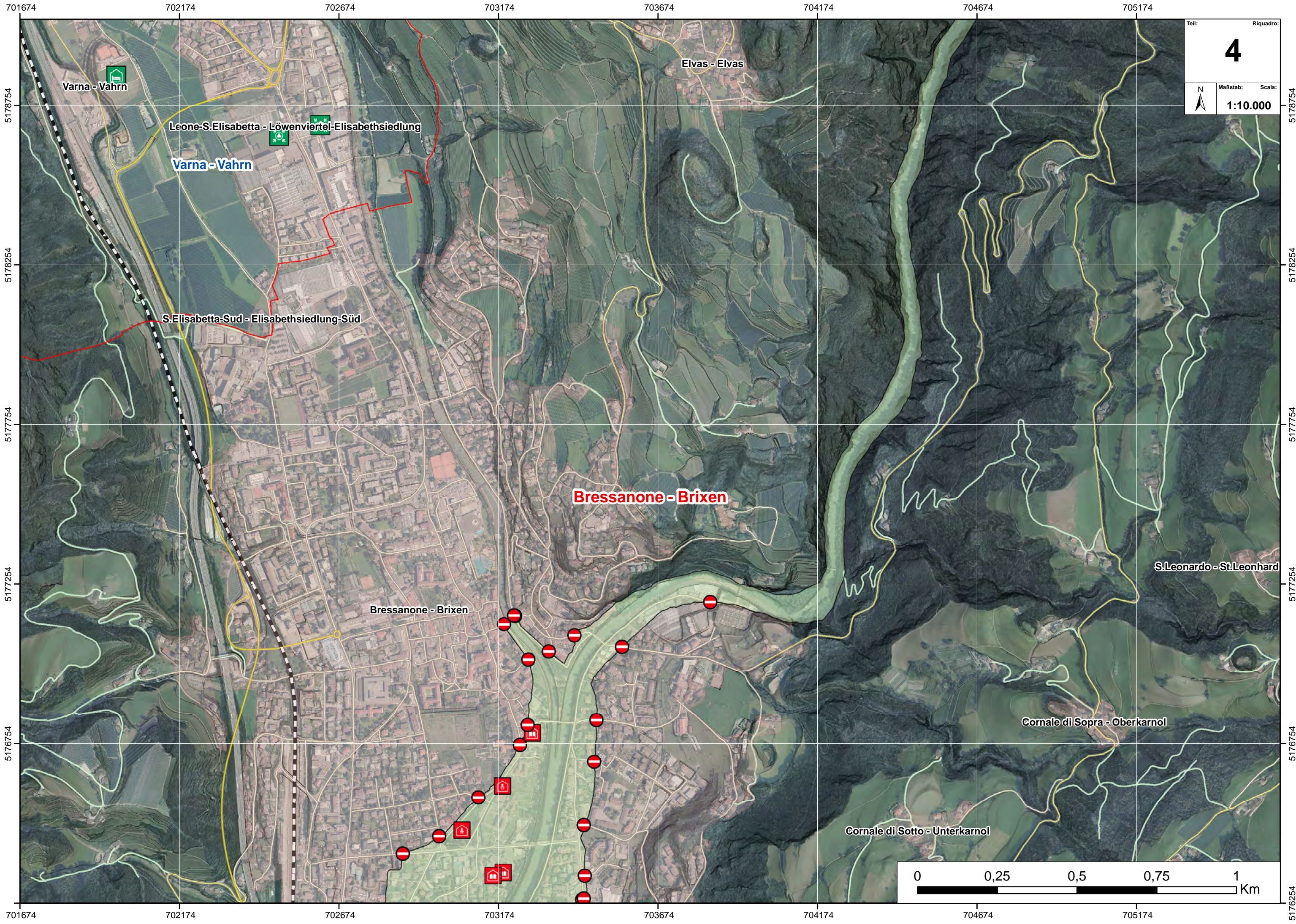
705520
5181237
5180737
5180237
5179737
5179237
705520

706020
5181237
5180737
5180237
5179737
5179237
706020

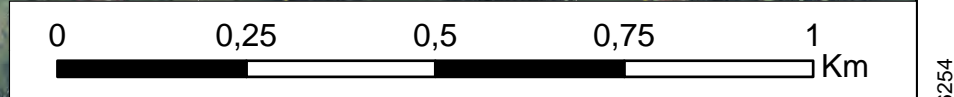
706520
5181237
5180737
5180237
5179737
5179237
706520

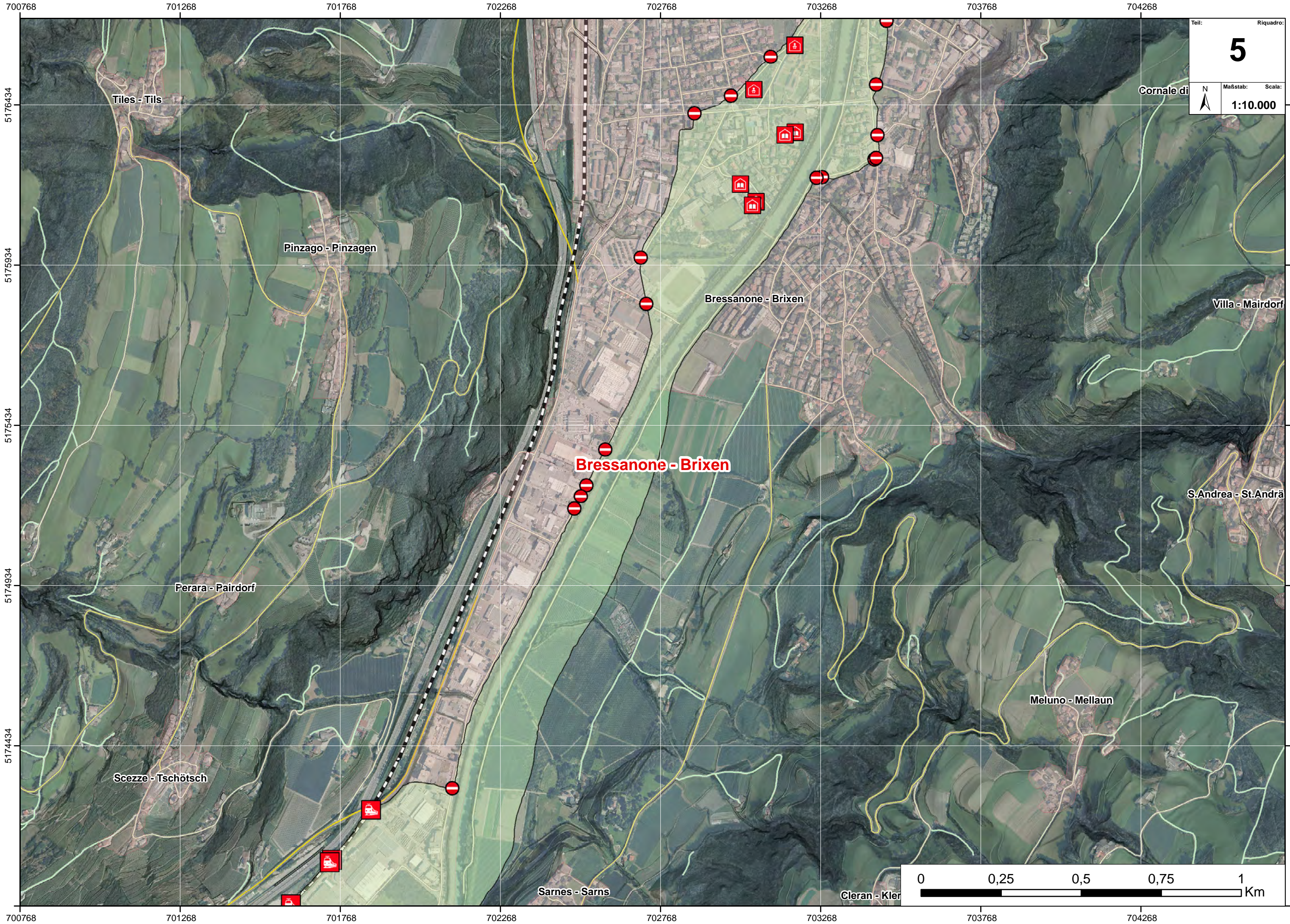
707020
5181237
5180737
5180237
5179737
5179237
707020

5181237
5180737
5180237
5179737
5179237
5178737

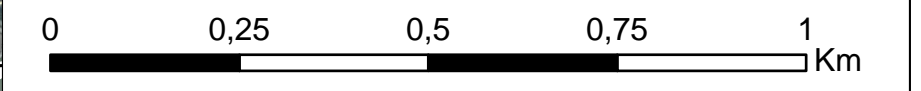


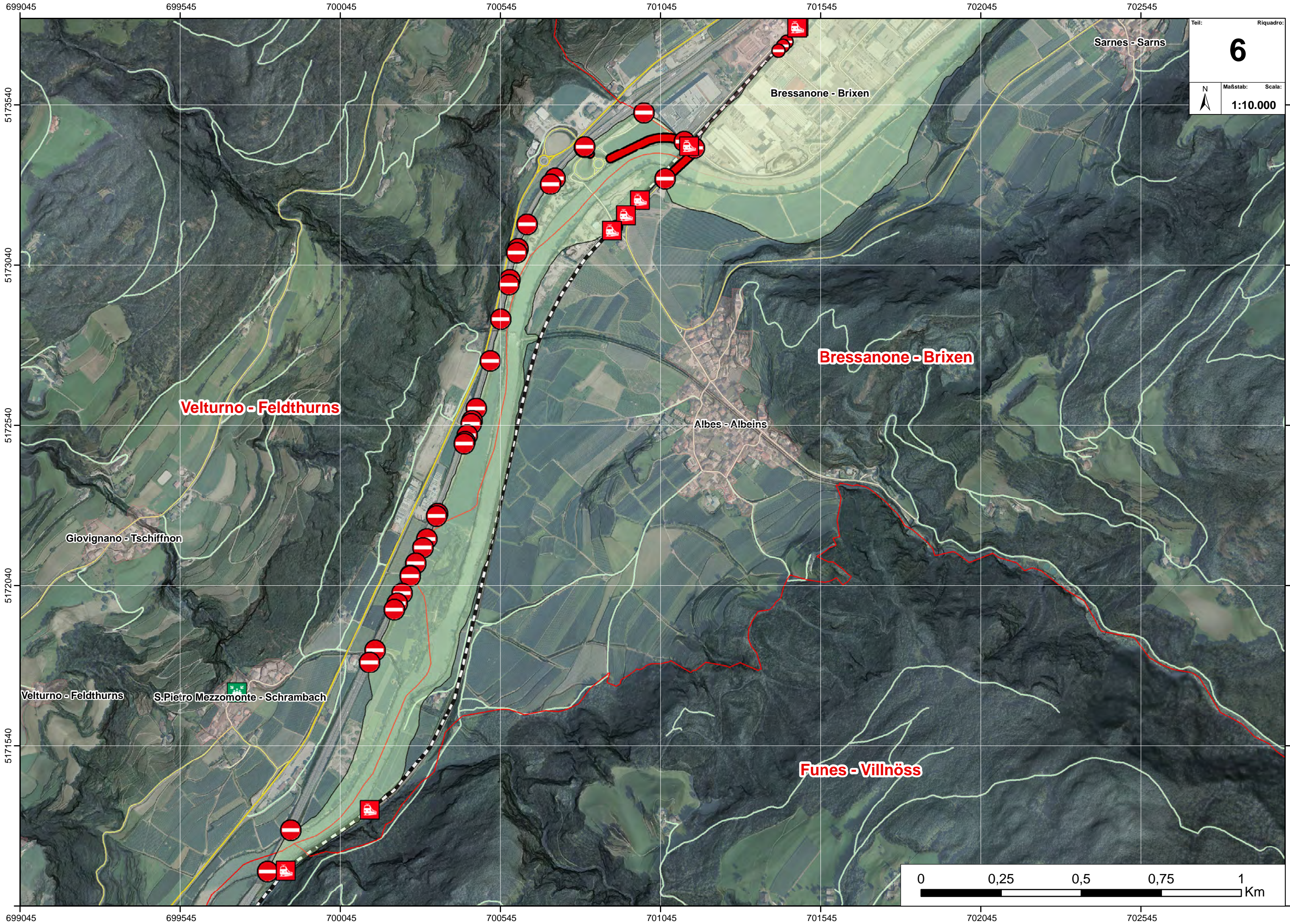
Teil: Riquadro:
4
Maßstab: Scala:
1:10.000





Teil: Riquadro:
5
MaBstab: Scala:
1:10.000



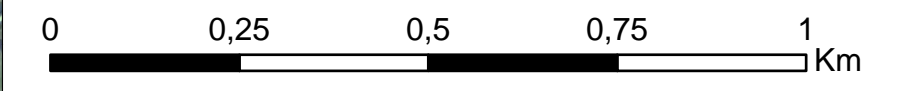


Teil: Riquadro:
6
Maßstab: Scala:
1:10.000

Veltuno - Feldthurns

Bressanone - Brixen

Funes - Villnöss



699045
5173540
5173040
5172540
5172040
5171540
699045

699545
5173540
5173040
5172540
5172040
5171540
699545

700045
5173540
5173040
5172540
5172040
5171540
700045

700545
5173540
5173040
5172540
5172040
5171540
700545

701045
5173540
5173040
5172540
5172040
5171540
701045

701545
5173540
5173040
5172540
5172040
5171540
701545

702045
5173540
5173040
5172540
5172040
5171540
702045

702545
5173540
5173040
5172540
5172040
5171540
702545

5173540
5173040
5172540
5172040
5171540
5171040