

Rischio idraulico a valle - Talseitiges Hydraulisches Risiko



Scala-Masstab:
1:80.000

Diga: **Neves**
 Staumauer: **Neves**
 N.Archivio: **1061** Nr. Archiv:

Piano di emergenza

DIRETTIVA DEL PRESIDENTE
DEL CONSIGLIO DEI MINISTRI
8 LUGLIO 2014

Notfallplan






RICHTLINIE DES PRÄSIDENTEN
DES MINISTERRATES VOM
8. JULI 2014



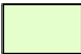
Carta operativa di rischio - Einsatzkarte

Versione Version	Data Datum	Elaborato Bearbeitet	Controllato Kontrolliert	Note Bemerkungen
1	30.06.2022	ML	RD	







Legenda - Legende

-  Invaso Neves - Staubecken Neves
-  Località - Ortschaft
-  Comuni interessati - Betroffene Gemeinden
-  Comuni - Gemeinden
-  Diga - Damm






Scenari - Szenarien

-  Scarichi di fondo - Grundablass


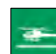




Mobilità - Mobilität

-  Ponti - Brücken
-  Cancelli rete ferroviaria - Sperren Schienen
-  Cancelli stradali A22 S.S. S.P. - Straßen Sperren A22 S.S. L.S.
-  Cancelli stradali S.C. - Straßen Sperren G.S.
-  Funivie - Seilbahnen
-  Ospedali - Krankenhäuser

Elementi vulnerabili - Vulnerable Elemente

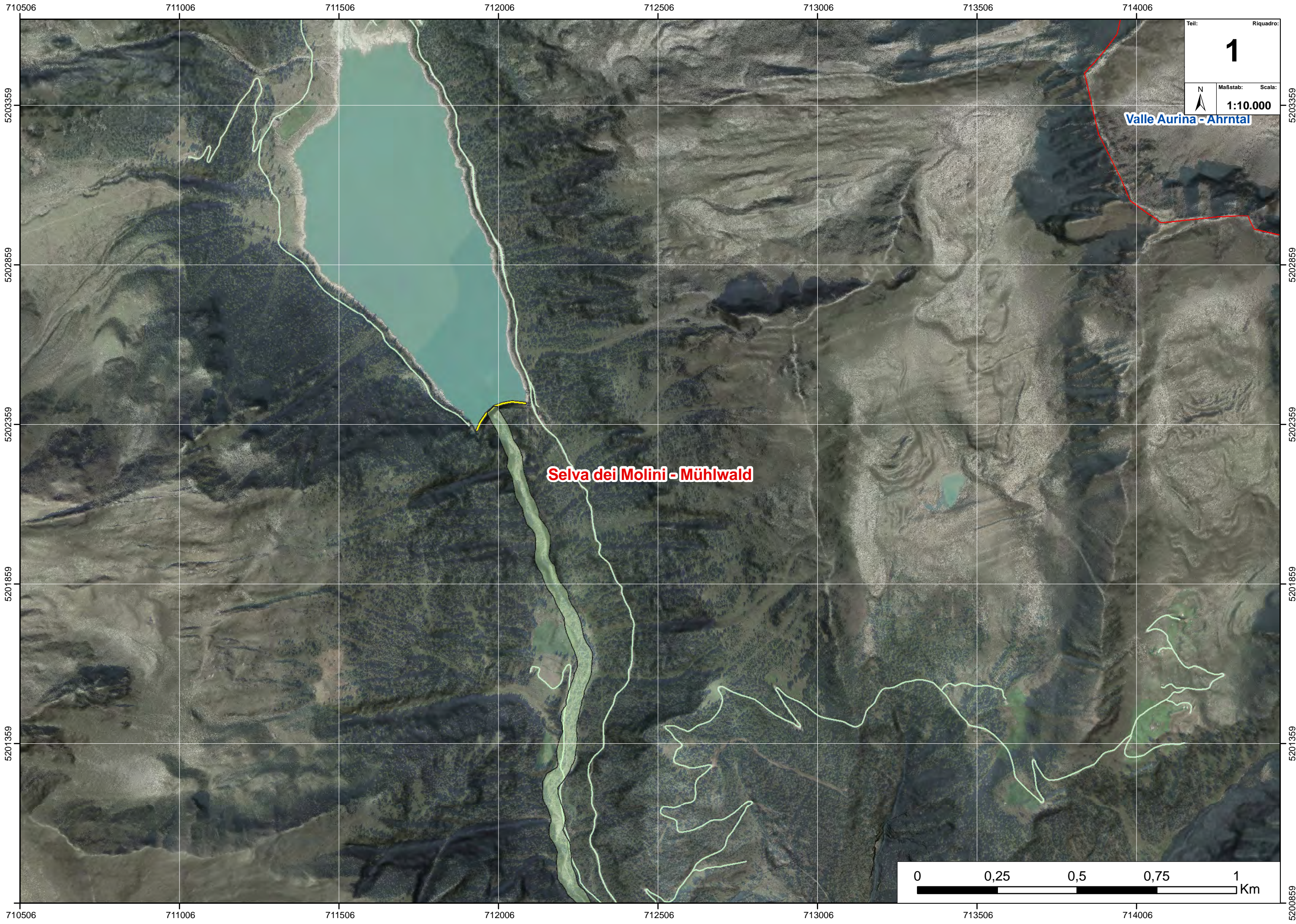
-  Distretto Sanitario - Gesundheitsprengel
-  Cooperativa frutticoltori - Obstgenossenschaft
-  Asili - Kindergärten
-  Scuole - Schulen
-  Case di riposo - Altersheime

Risorse fruibili - Ressourcen sicher

-  Area punto di raccolta - Sammelstellen
-  Elisuperfici di soccorso - Hubschrauberlandplätze
-  Aree di ammassamento per i soccorsi - Bereitstellungsräume
-  Aree di ammassamento animali domestici - Notunterkunft Haustiere
-  Aree o strutture di accoglienza ricovero - Notunterkünfte
-  COC - GLS

Rete viaria: strade e sentieri – Verkehrsnetz: Straßen und Wege

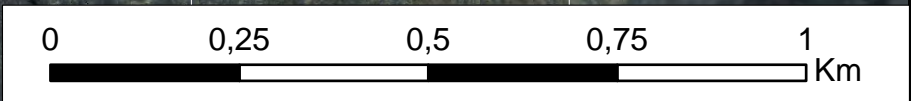
Ortofoto - Orthofoto 2020

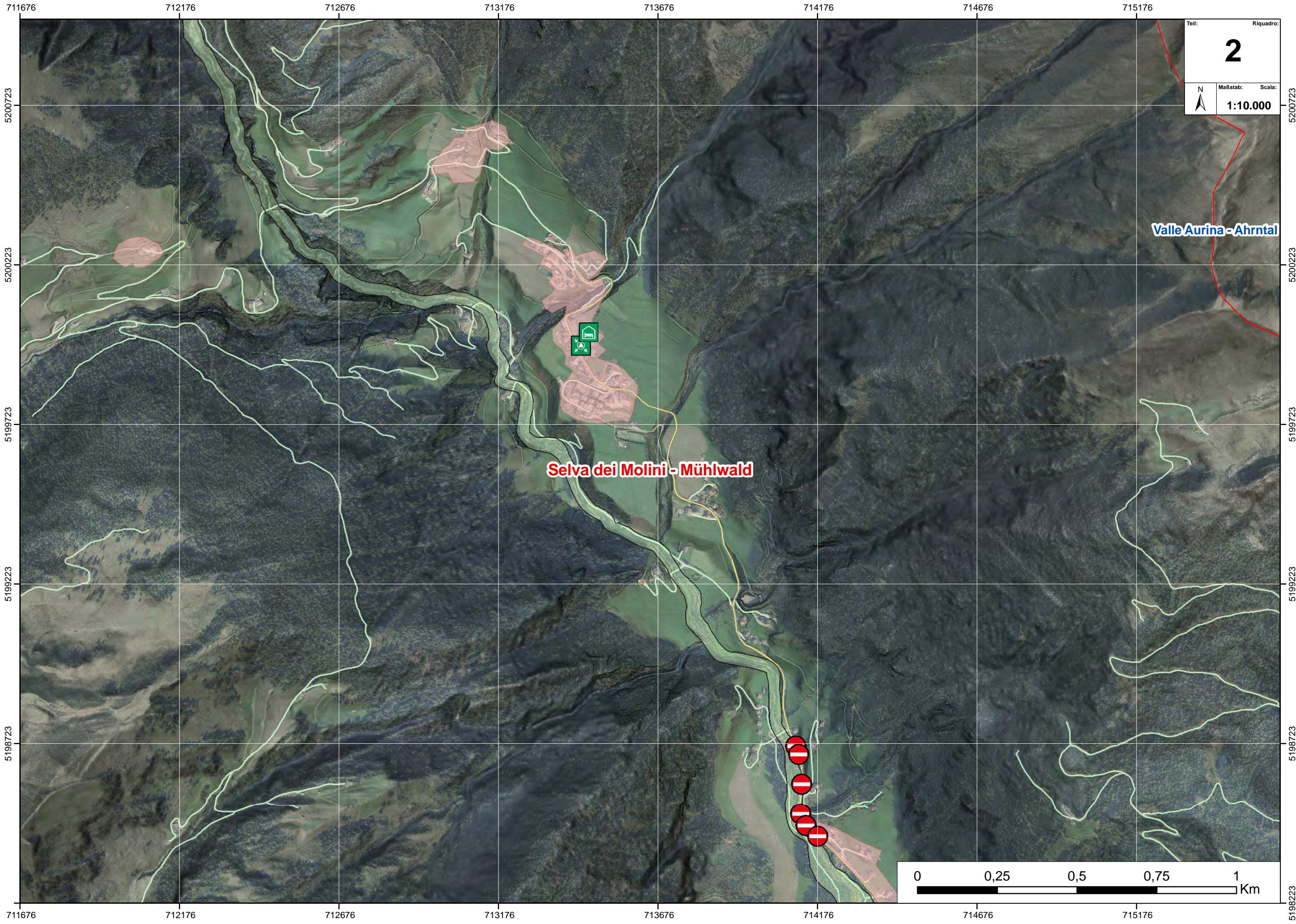


Teil: **1** Riquadro:
Maßstab: 1:10.000 Scala:

Valle Aurina - Ahrntal

Selva dei Molini - Mühlwald

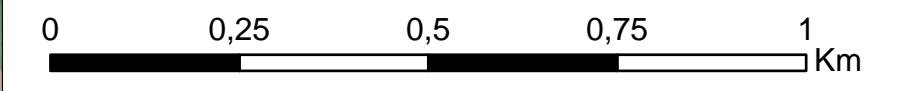




Teil: **2** Riquadro:
Maßstab: **1:10.000** Scala:

Valle Aurina - Ahrntal

Selva dei Molini - Mühlwald



711676
5200723
5200223
5199723
5199223
5198723
711676

712176
712176
712176
712176
712176
712176
712176

712676
712676
712676
712676
712676
712676
712676

713176
713176
713176
713176
713176
713176
713176

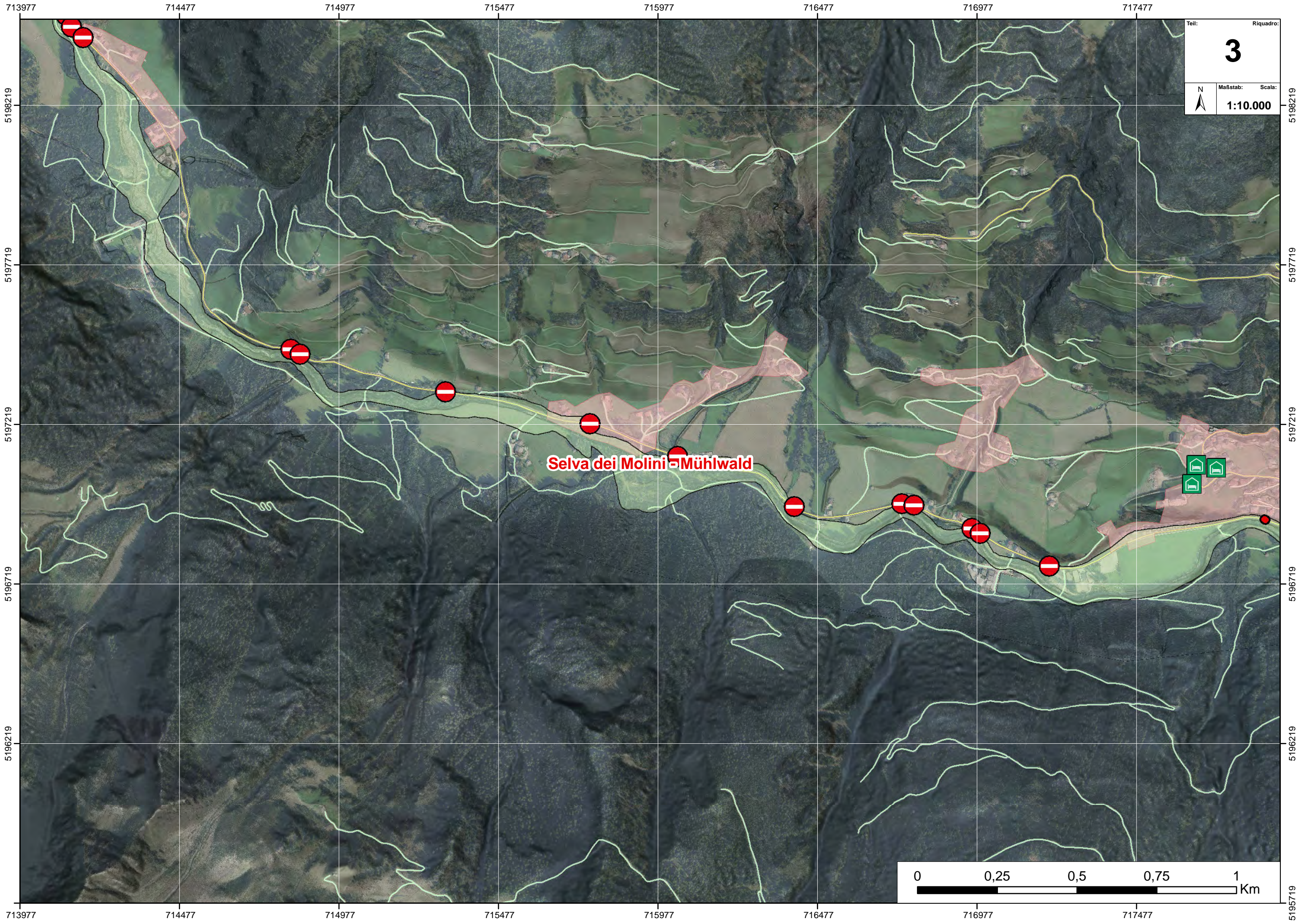
713676
713676
713676
713676
713676
713676
713676

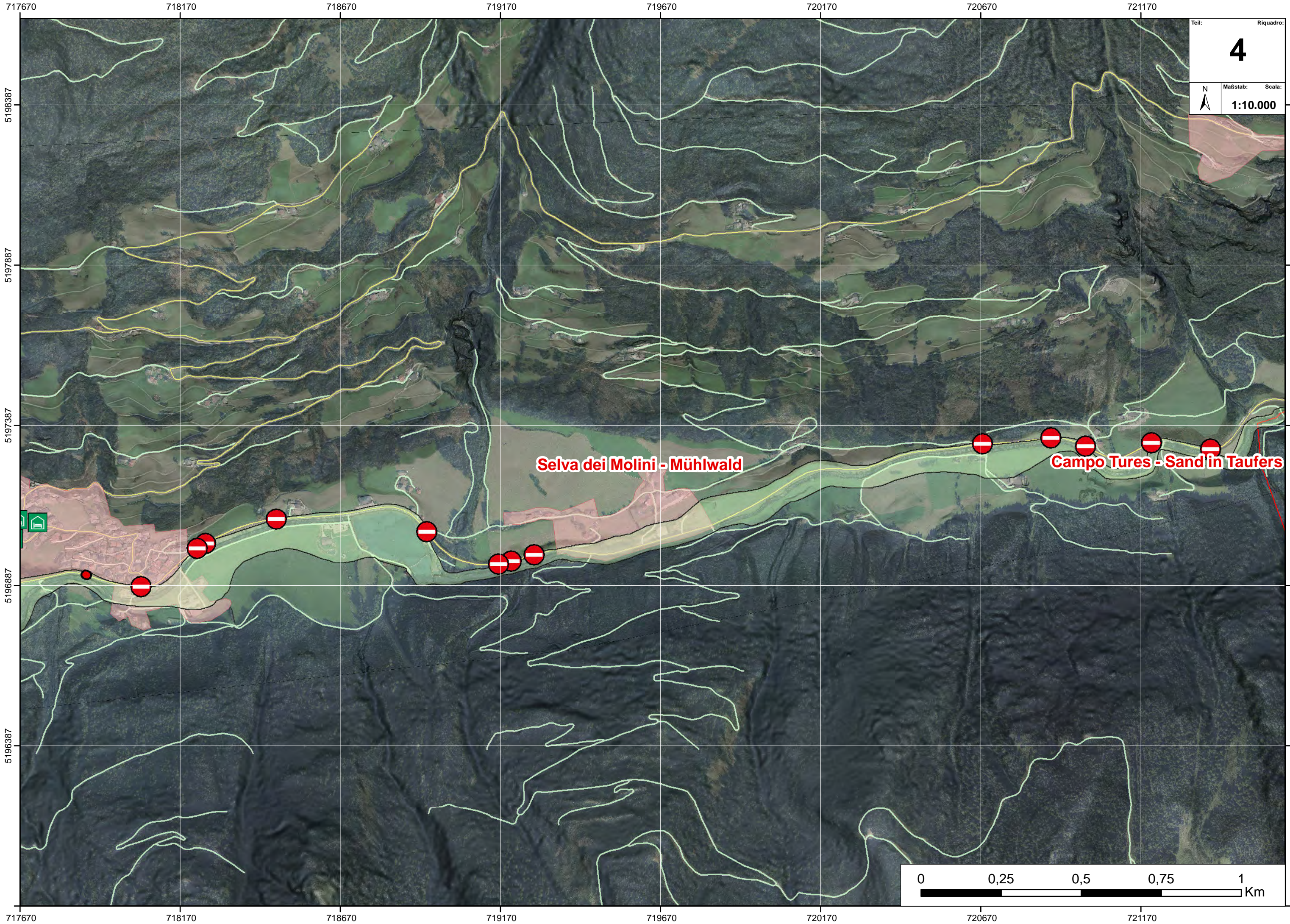
714176
714176
714176
714176
714176
714176
714176

714676
714676
714676
714676
714676
714676
714676

715176
715176
715176
715176
715176
715176
715176

5200723
5200223
5199723
5199223
5198723
5198223
5198223





717670

718170

718670

719170

719670

720170

720670

721170

5198387

5197887

5197387

5196887

5196387

717670

718170

718670

719170

719670

720170

720670

721170

5198387

5197887

5197387

5196887

5196387

5195887

Teil: Riquadro:

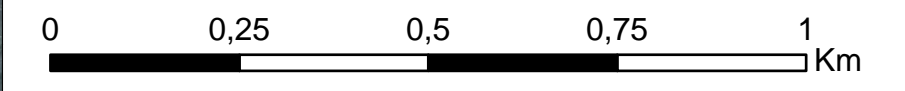
4

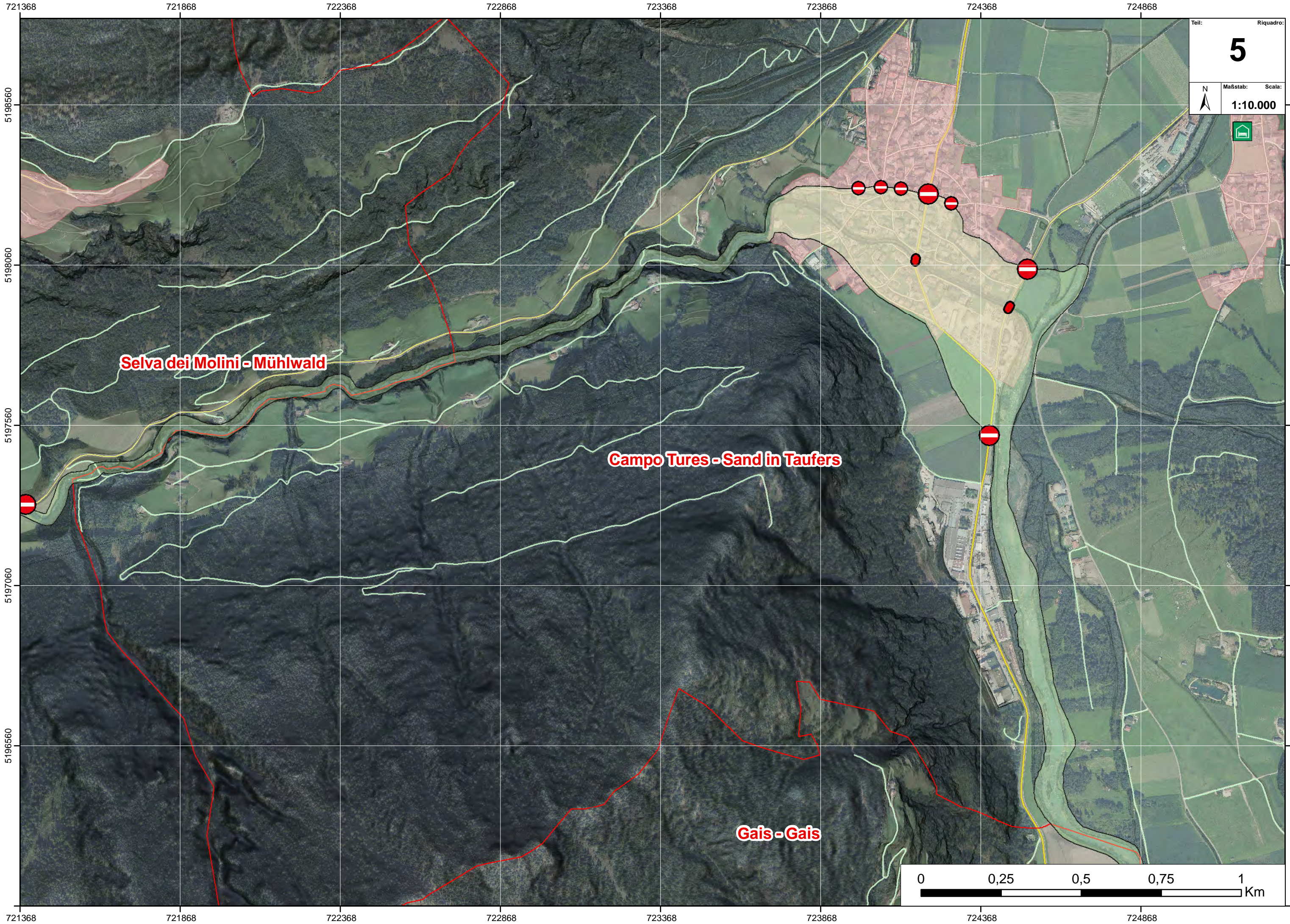
N Maßstab: Scala:

1:10.000

Selva dei Molini - Mühlwald

Campo Tures - Sand in Taufers





Selva dei Molini - Mühlwald

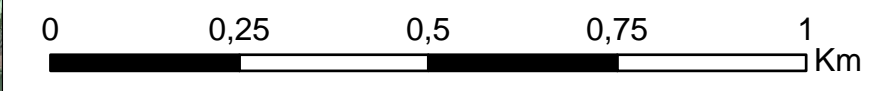
Campo Tures - Sand in Taufers

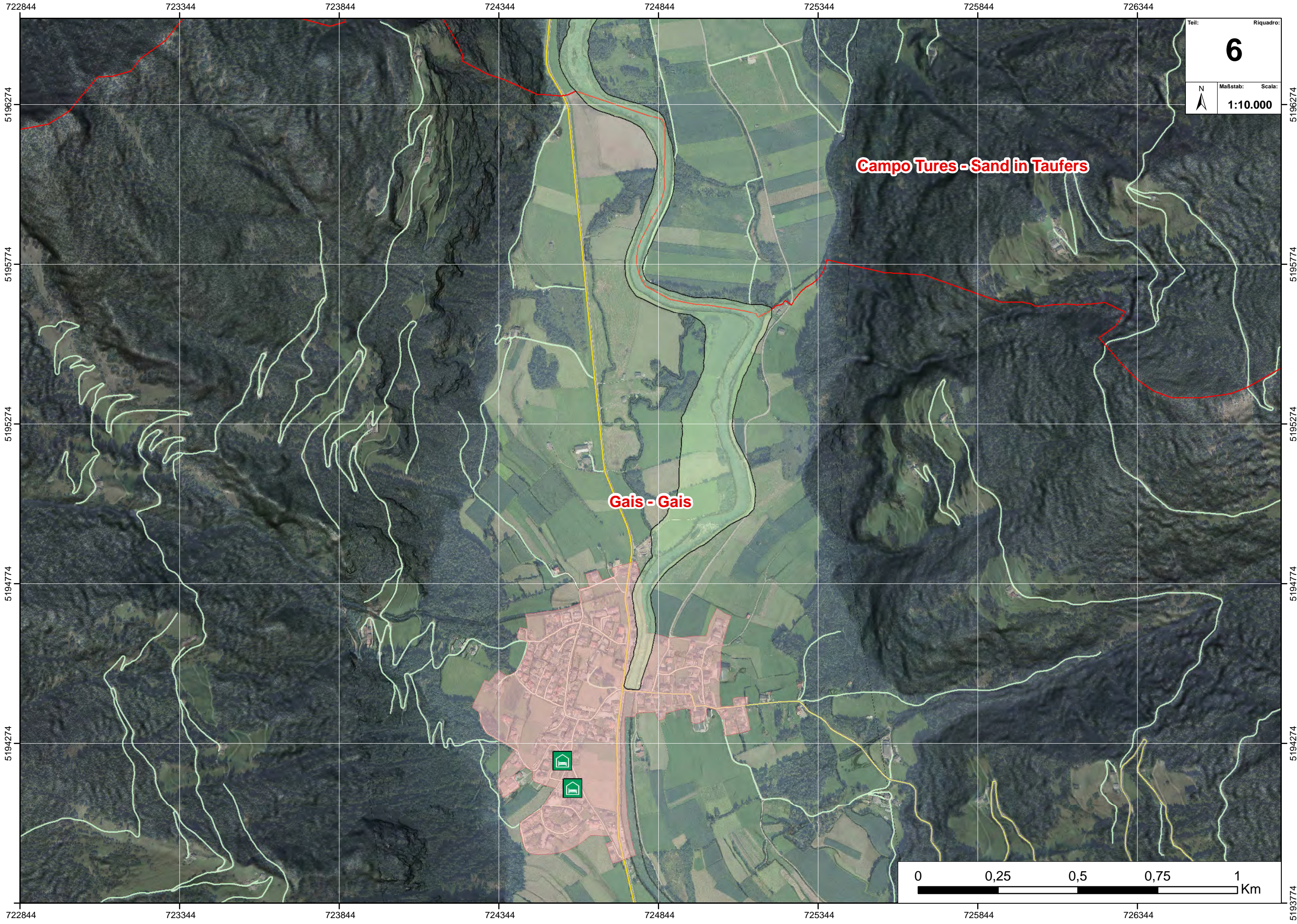
Gais - Gais

Teil: **5** Riquadro:

Maßstab: **1:10.000** Scala:

N





722844

723344

723844

724344

724844

725344

725844

726344

5196274

5195774

5195274

5194774

5194274

722844

723344

723844

724344

724844

725344

725844

726344

5196274

5195774

5195274

5194774

5194274

5193774

Teil: Riquadro:
6
 Maßstab: Scala:
1:10.000

Campo Tures - Sand in Taufers

Gais - Gais

