

Rischio idraulico a valle - Talseitiges Hydraulisches Risiko



Traversa: **Kniepass**
 Stauwehr: **Kniepass**
 N.Archivio: **1655** Nr. Archiv:

Piano di emergenza

DIRETTIVA DEL PRESIDENTE
 DEL CONSIGLIO DEI MINISTRI
 8 LUGLIO 2014

Notfallplan

RICHTLINIE DES PRÄSIDENTEN
 DES MINISTERRATES VOM
 8. JULI 2014




Scala-Masstab:
1:90.000



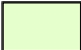
Carta operativa di rischio - Einsatzkarte

Versione Version	Data Datum	Elaborato Bearbeitet	Controllato Kontrolliert	Note Bemerkungen
1	31.12.2021	ML	RD	







Legenda - Legende

-  Località - Ortschaft
-  Comuni interessati - Betroffene Gemeinden
-  Comuni - Gemeinden
-  Diga - Damm






Scenari - Szenarien

-  Scarichi di fondo - Grundablass







Mobilità - Mobilität

-  Ponti - Brücken
-  Cancelli rete ferroviaria - Sperren Schienen
-  Cancelli stradali A22 S.S. S.P. - Straßen Sperren A22 S.S. L.S.
-  Cancelli stradali S.C. - Straßen Sperren G.S.
-  Funivie - Seilbahnen
-  Ospedali - Krankenhäuser

Elementi vulnerabili - Vulnerable Elemente

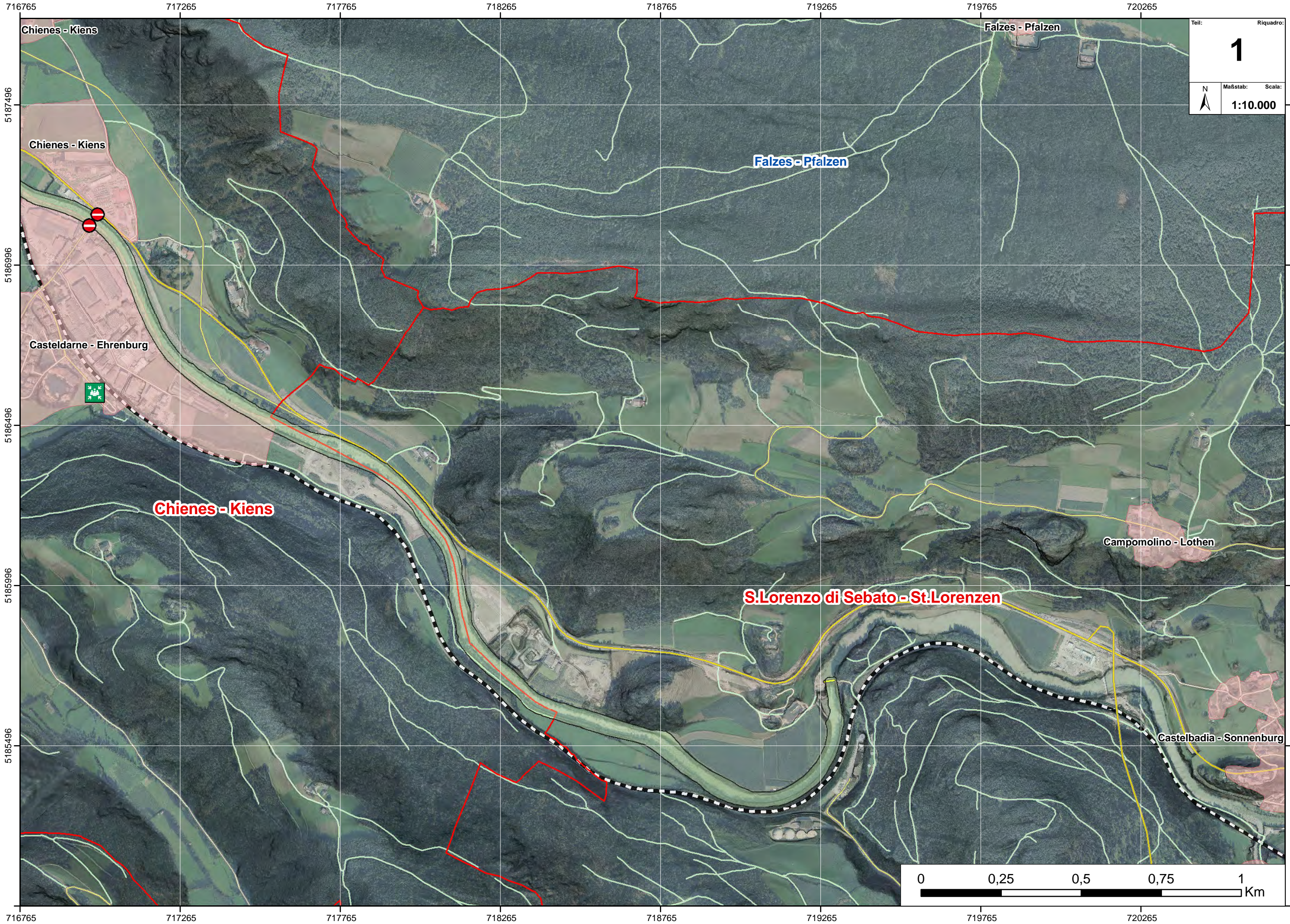
-  Distretto Sanitario - Gesundheitsprengel
-  Cooperativa frutticoltori - Obstgenossenschaft
-  Asili - Kindergärten
-  Scuole - Schulen
-  Case di riposo - Altersheime

Risorse fruibili - Ressourcen sicher

-  Area punto di raccolta - Sammelstellen
-  Elisuperfici di soccorso - Hubschrauberlandplätze
-  Aree di ammassamento per i soccorsi - Bereitstellungsräume
-  Aree di ammassamento animali domestici - Notunterkunft Haustiere
-  Aree o strutture di accoglienza ricovero - Notunterkünfte
-  COC - GLS

Rete viaria: strade e sentieri – Verkehrsnetz: Straßen und Wege

Ortofoto - Orthofoto 2020



716765

717265

717765

718265

718765

719265

719765

720265

5187496

5186996

5186496

5185996

5185496

5184996

5184496

5183996

5183496

716765

717265

717765

718265

718765

719265

719765

720265

5187496

5186996

5186496

5185996

5185496

5184996

5184496

5183996

5183496

5184996

Teil: Riquadro:

1

Maßstab: Scala:

1:10.000

N

Chienes - Kiens

Falzes - Pfalzen

Chienes - Kiens

Falzes - Pfalzen

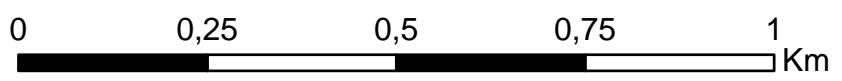
Casteldarne - Ehrenburg

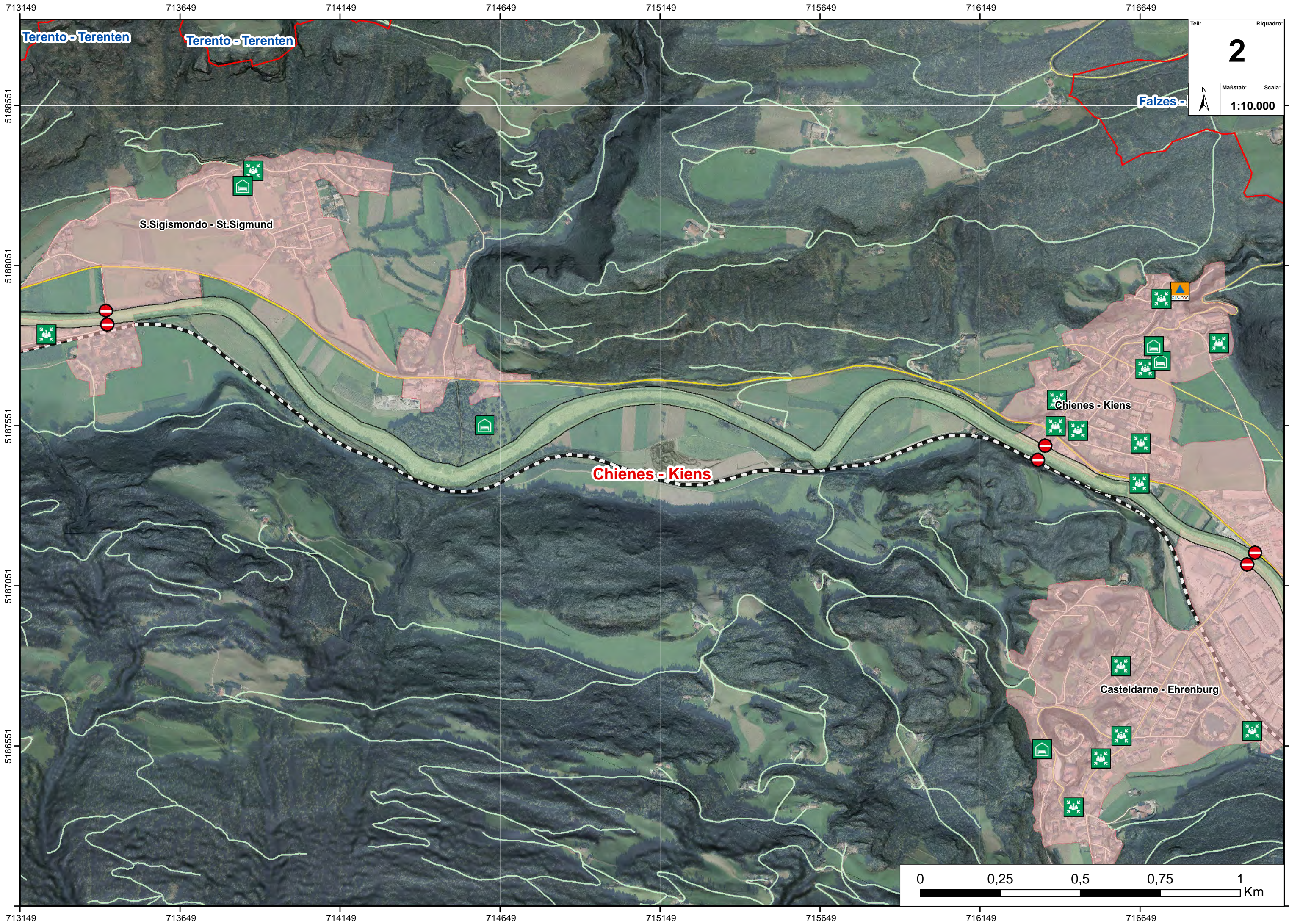
Chienes - Kiens

Campomolino - Lothen

S. Lorenzo di Sebato - St. Lorenzen

Castelbadia - Sonnenburg



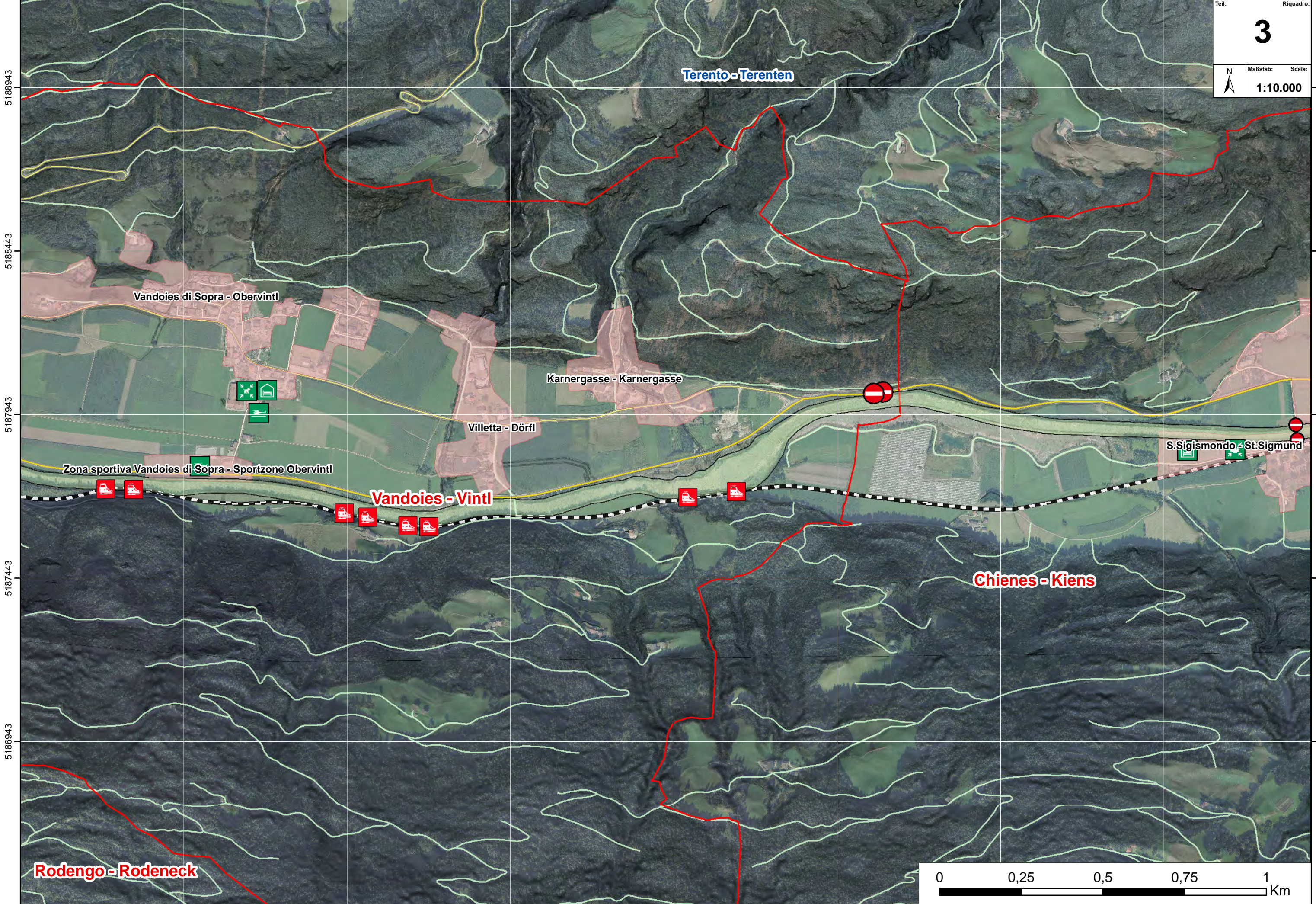


709516 710016 710516 711016 711516 712016 712516 713016

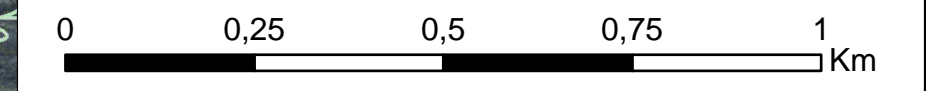
Teil: **3** Riquadro:

Maßstab: **1:10.000** Scala:

N



709516 710016 710516 711016 711516 712016 712516 713016



Rodengo - Rodeneck

Terento - Terenten

Vandoies di Sopra - Obervintl

Karnergasse - Karnergasse

Villetta - Dörf

Vandoies - Vintl

Zona sportiva Vandoies di Sopra - Sportzone Obervintl

S. Sigismondo - St. Sigmund

Chienes - Kiens

705874 706374 706874 707374 707874 708374 708874 709374

5188956
5188456
5187956
5187456
5186956

Teil: **4** Riquadro:
 Maßstab: **1:10.000** Scala:
 N

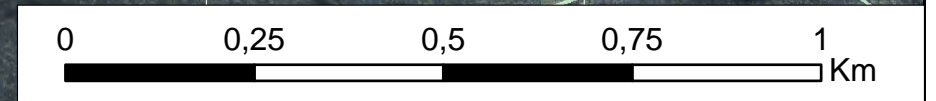
Terento - Terenten

Vandoies di Sotto - Niedervintl

Vandoies di Sopra - Obervintl

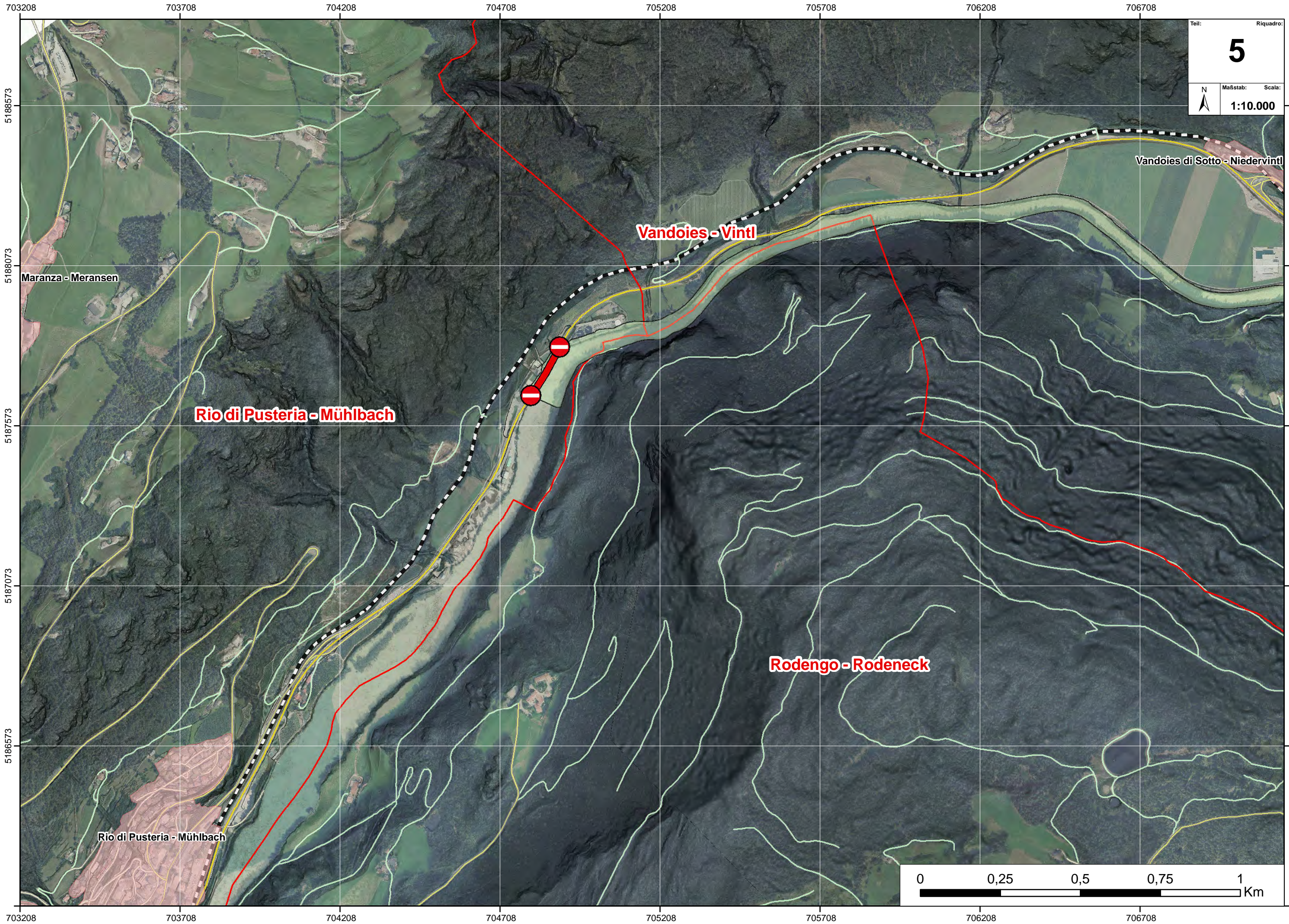
Vandoies - Vintl

Rodengo - Rodeneck



705874 706374 706874 707374 707874 708374 708874 709374

5188956
5188456
5187956
5187456
5186956



Teil: Riquadro:
5
Maßstab: Scala:
1:10.000

