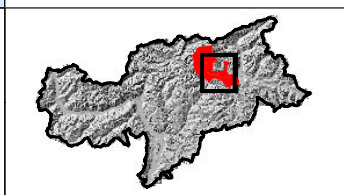


Rischio Diga - Risiko Stauanlage

**Scala-Masstab:
1:100.000**

Traversa: **Kniepass**
 Stauwehr: **Kniepass**
 N. Archivio: **1655** Nr. Archiv:





Piano di emergenza	Notfallplan
DIRETTIVA DEL PRESIDENTE DEL CONSIGLIO DEI MINISTRI 8 LUGLIO 2014	RICHTLINIE DES PRÄSIDENTEN DES MINISTERRATES VOM 8. JULI 2014



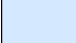
Carta operativa di rischio - Einsatzkarte

Versione Version	Data Datum	Elaborato Bearbeitet	Controllato Kontrolliert	Note Bemerkungen
1	30.06.2022	ML	RD	







Legenda - Legende

-  Località - Ortschaft
-  Comuni interessati - Betroffene Gemeinden
-  Comuni - Gemeinden
-  Diga - Damm






Scenari - Szenarien

-  Dammbruch - Collasso







Mobilità - Mobilität

-  Ponti - Brücken
-  Cancelli rete ferroviaria - Sperren Schienen
-  Cancelli stradali A22 S.S. S.P. - Straßen Sperren A22 S.S. L.S.
-  Cancelli stradali S.C. - Straßen Sperren G.S.
-  Funivie - Seilbahnen
-  Ospedali - Krankenhäuser

Elementi vulnerabili - Vulnerable Elemente

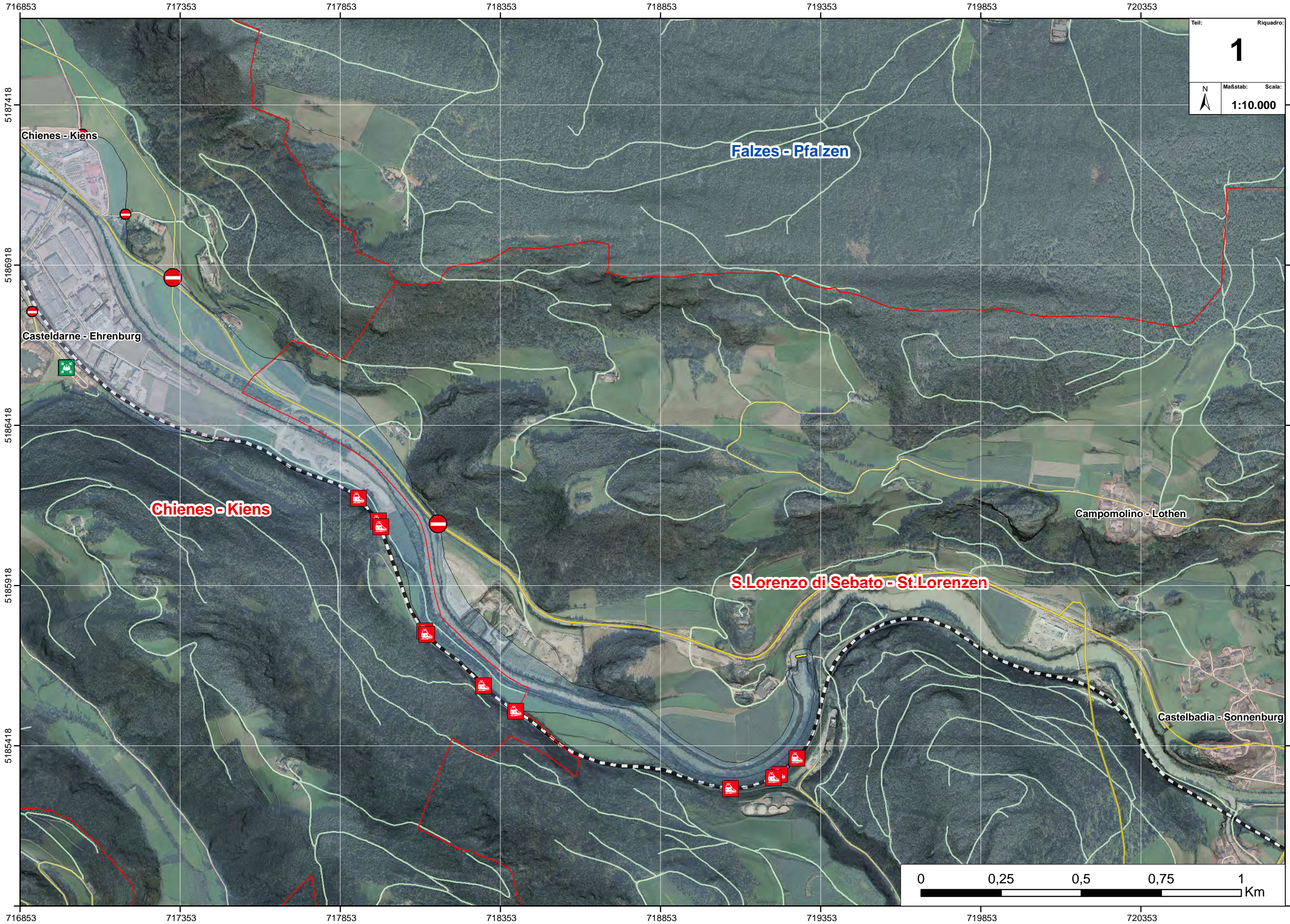
-  Distretto Sanitario - Gesundheitsprengel
-  Cooperativa frutticoltori - Obstgenossenschaft
-  Asili - Kindergärten
-  Scuole - Schulen
-  Case di riposo - Altersheime

Risorse fruibili - Ressourcesicher

-  Area punto di raccolta - Sammelstellen
-  Elisuperfici di soccorso - Hubschrauberlandplätze
-  Aree di ammassamento per i soccorsi - Bereitstellungsräume
-  Aree di ammassamento animali domestici - Notunterkunft Haustiere
-  Aree o strutture di accoglienza ricovero - Notunterkünfte
-  COC - GLS

Rete viaria: strade e sentieri – Verkehrsnetz: Straßen und Wege

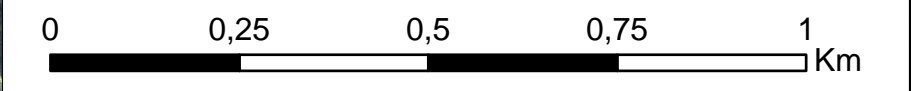
Ortofoto - Orthofoto 2020



Teil: **1** Riquadro:

Maßstab: **1:10.000** Scala:

N



Chienes - Kiens

Casteldarne - Ehrenburg

Falzes - Pfalzen

Chienes - Kiens

S.Lorenzo di Sebato - St.Lorenzen

Campomolino - Lothen

Castelbadia - Sonnenburg

5187418

5186918

5186418

5185918

5185418

5187418

5186918

5186418

5185918

5185418

5184918

716853 717353 717853 718353 718853 719353 719853 720353


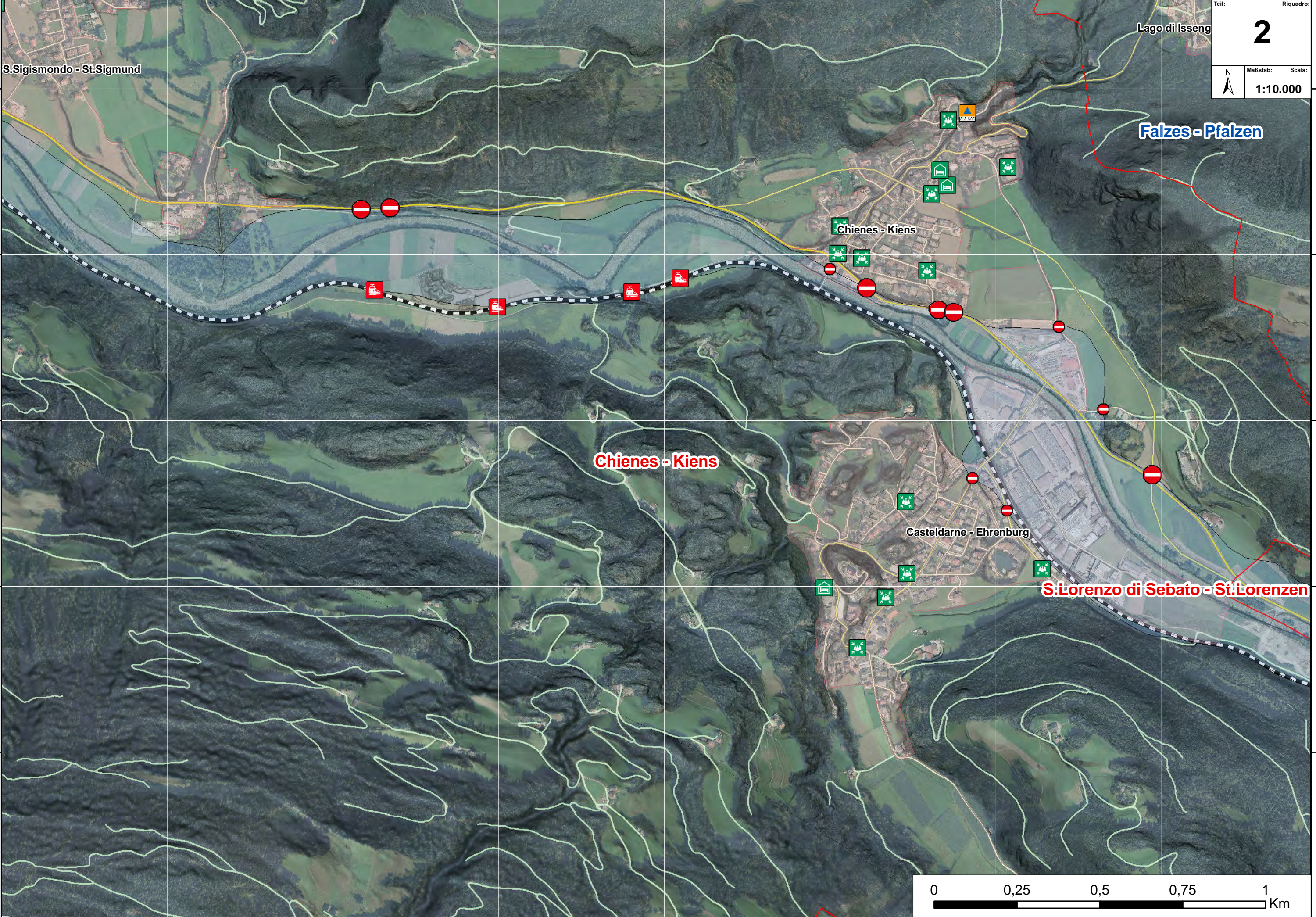
716853 717353 717853 718353 718853 719353 719853 720353

713860 714360 714860 715360 715860 716360 716860 717360

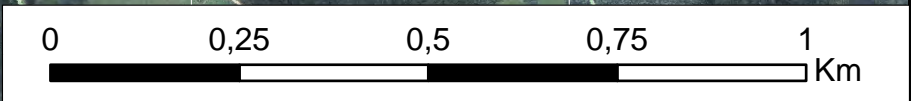
5188044
5187544
5187044
5186544
5186044

Teil: Riquadro: **2**

Maßstab: Scala: **1:10.000**

713860 714360 714860 715360 715860 716360 716860 717360



5185544

S.Sigismondo - St.Sigmund

Lago di Isseng

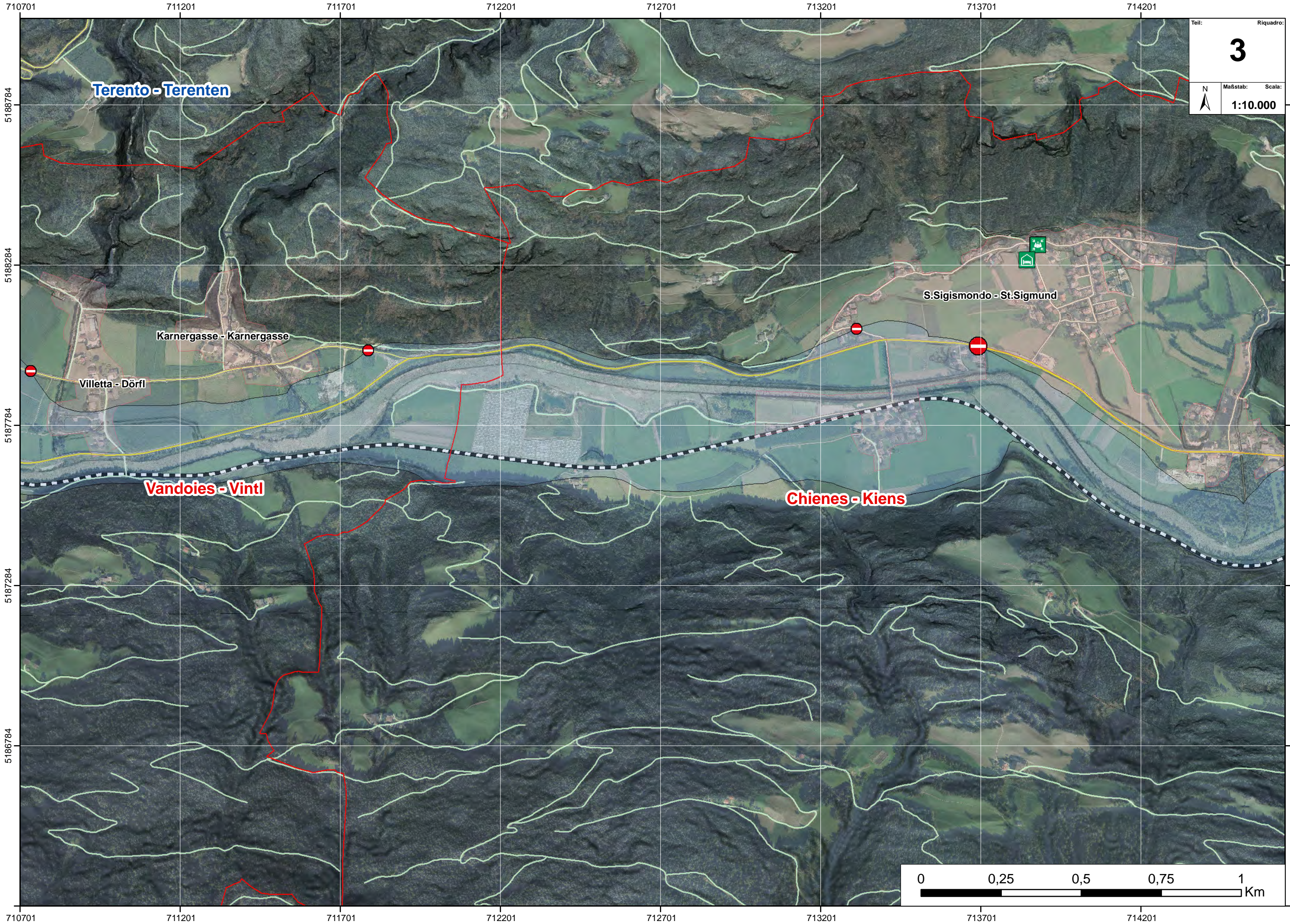
Falzes - Pfalzen

Chienes - Kiens

Chienes - Kiens

Casteldarne - Ehrenburg

S.Lorenzo di Sebato - St.Lorenzen



Terento - Terenten

Villetta - Dörf

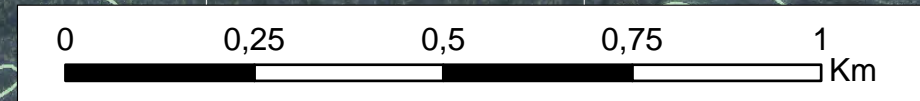
Karnergasse - Karnergasse

Vandoies - Vintl

Chienes - Kiens

S. Sigismondo - St. Sigmund

Teil:	Riquadro:
	3
Maßstab:	Scala:
1:10.000	



710701
5188784
5188284
5187784
5187284
5186784
710701

711201
5188784
5188284
5187784
5187284
5186784
711201

711701
5188784
5188284
5187784
5187284
5186784
711701

712201
5188784
5188284
5187784
5187284
5186784
712201

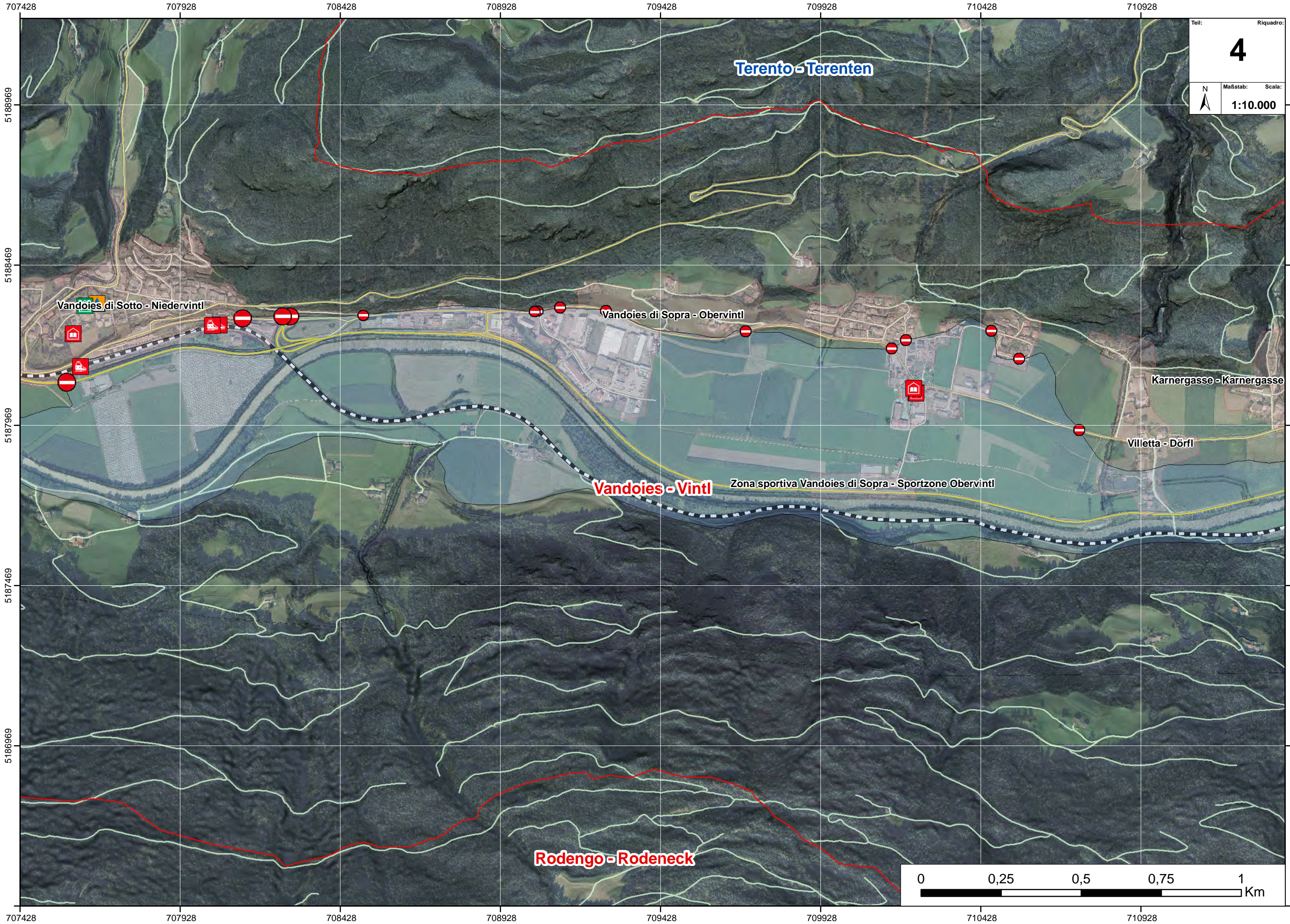
712701
5188784
5188284
5187784
5187284
5186784
712701

713201
5188784
5188284
5187784
5187284
5186784
713201

713701
5188784
5188284
5187784
5187284
5186784
713701

714201
5188784
5188284
5187784
5187284
5186784
714201

5188784
5188284
5187784
5187284
5186784
5186284



Teil: Riquadro:
4
Maßstab: Scala:
1:10.000

Vandoies di Sotto - Niedervintl

Vandoies di Sopra - Obervintl

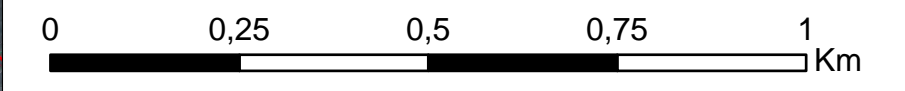
Karnergasse - Karnergasse

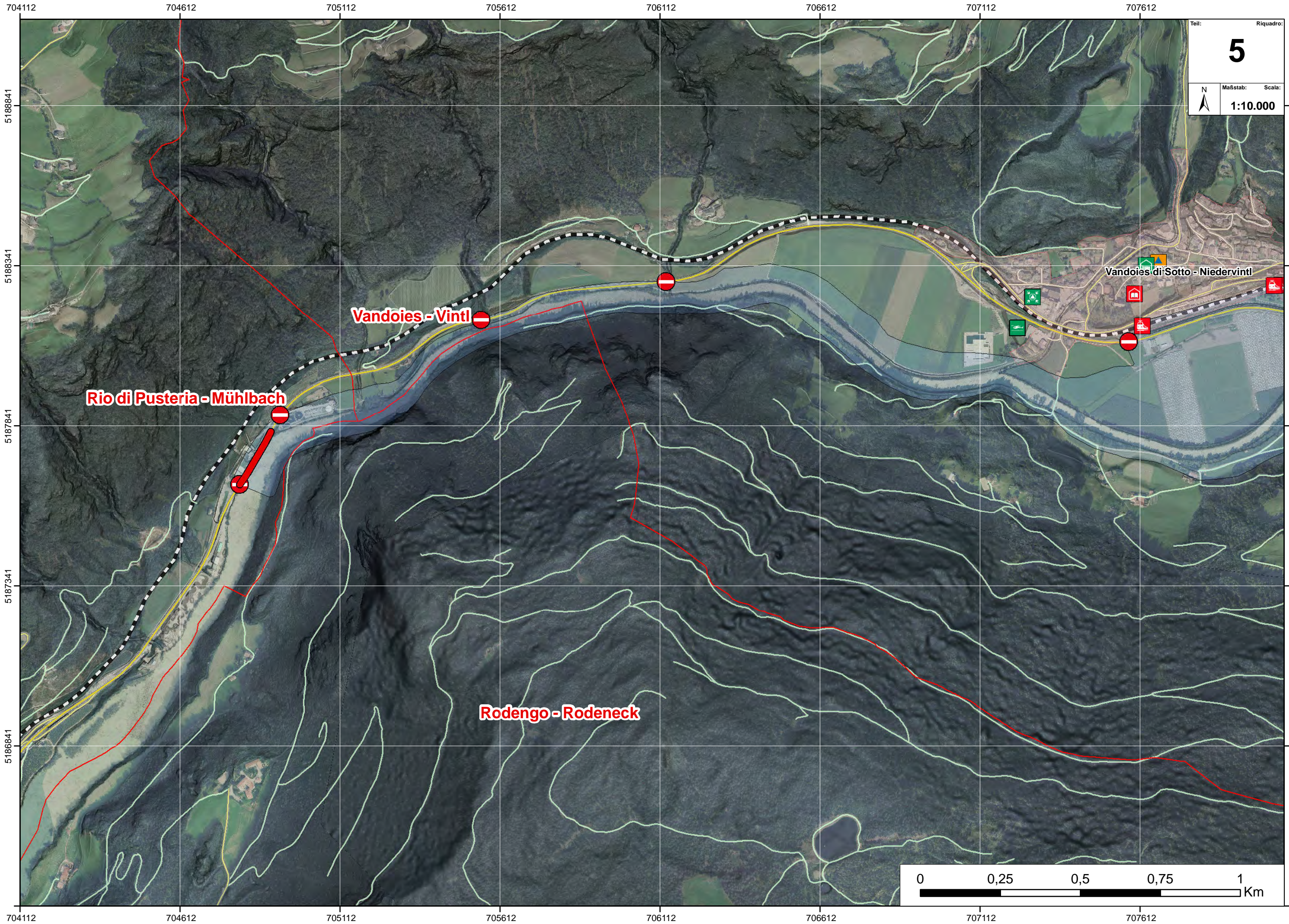
Villetta - Dörfel

Vandoies - Vintl

Zona sportiva Vandoies di Sopra - Sportzone Obervintl

Rodengo - Rodeneck





Teil: Riquadro:
5
Maßstab: Scala:
1:10.000

Rio di Pusteria - Mühlbach

Vandoies - Vintl

Rodengo - Rodeneck

Vandoies di Sotto - Niedervintl

