

## Rischio idraulico a valle - Talseitiges Hydraulisches Risiko



**Diga:** Fontana Bianca  
**Staudamm:** Weißbrunn  
**N.Archivio:** 932 - 932A      **Nr. Archiv:**

### Piano di emergenza

DIRETTIVA DEL PRESIDENTE  
 DEL CONSIGLIO DEI MINISTRI  
 8 LUGLIO 2014

### Notfallplan

RICHTLINIE DES PRSIDENTEN  
 DES MINISTERRATES VOM  
 8. JULI 2014






**Scala-Masstab:**  
**1:65.000**




## Carta operativa di rischio - Einsatzkarte

Versione Version	Data Datum	Elaborato Bearbeitet	Controllato Kontrolliert	Note Bemerkungen
1	30.06.2022	ML	RD	






## Legenda - Legende

-  Invaso Fontana Bianca - Staubecken Weißbrunn
-  Località - Ortschaft
-  Comuni interessati - Betroffene Gemeinden
-  Comuni - Gemeinden
-  Diga - Damm






## Scenari - Szenarien

-  Scarichi di fondo - Grundablass







## Mobilità - Mobilität

-  Ponti - Brücken
-  Cancelli rete ferroviaria - Sperren Schienen
-  Cancelli stradali A22 S.S. S.P. - Straßen Sperren A22 S.S. L.S.
-  Cancelli stradali S.C. - Straßen Sperren G.S.
-  Funivie - Seilbahnen

## Elementi vulnerabili - Vulnerable Elemente

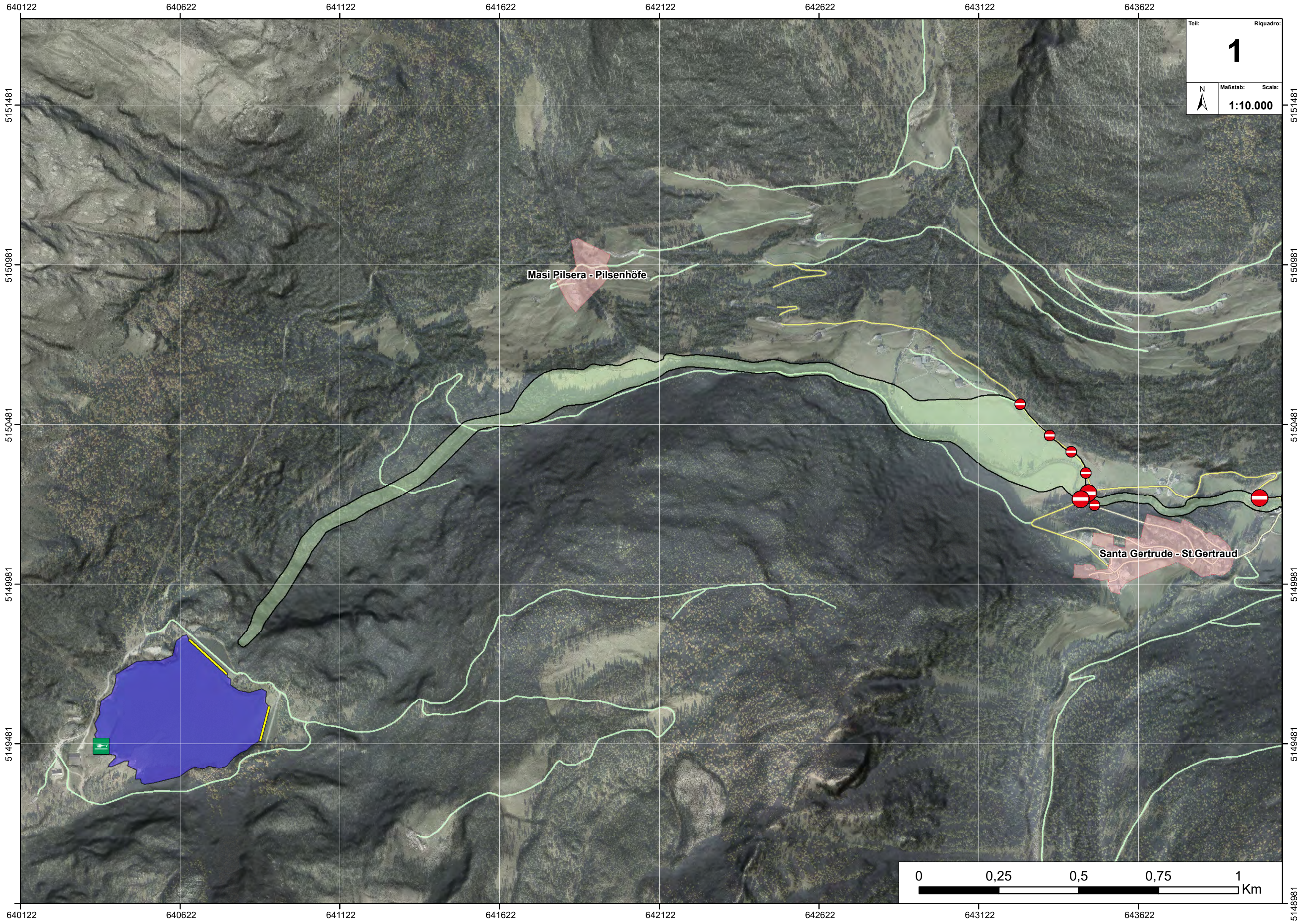
-  Distretto Sanitario - Gesundheitsprengel
-  Cooperativa frutticoltori - Obstgenossenschaft
-  Asili - Kindergarten
-  Scuole - Schulen
-  Case di riposo - Altersheime

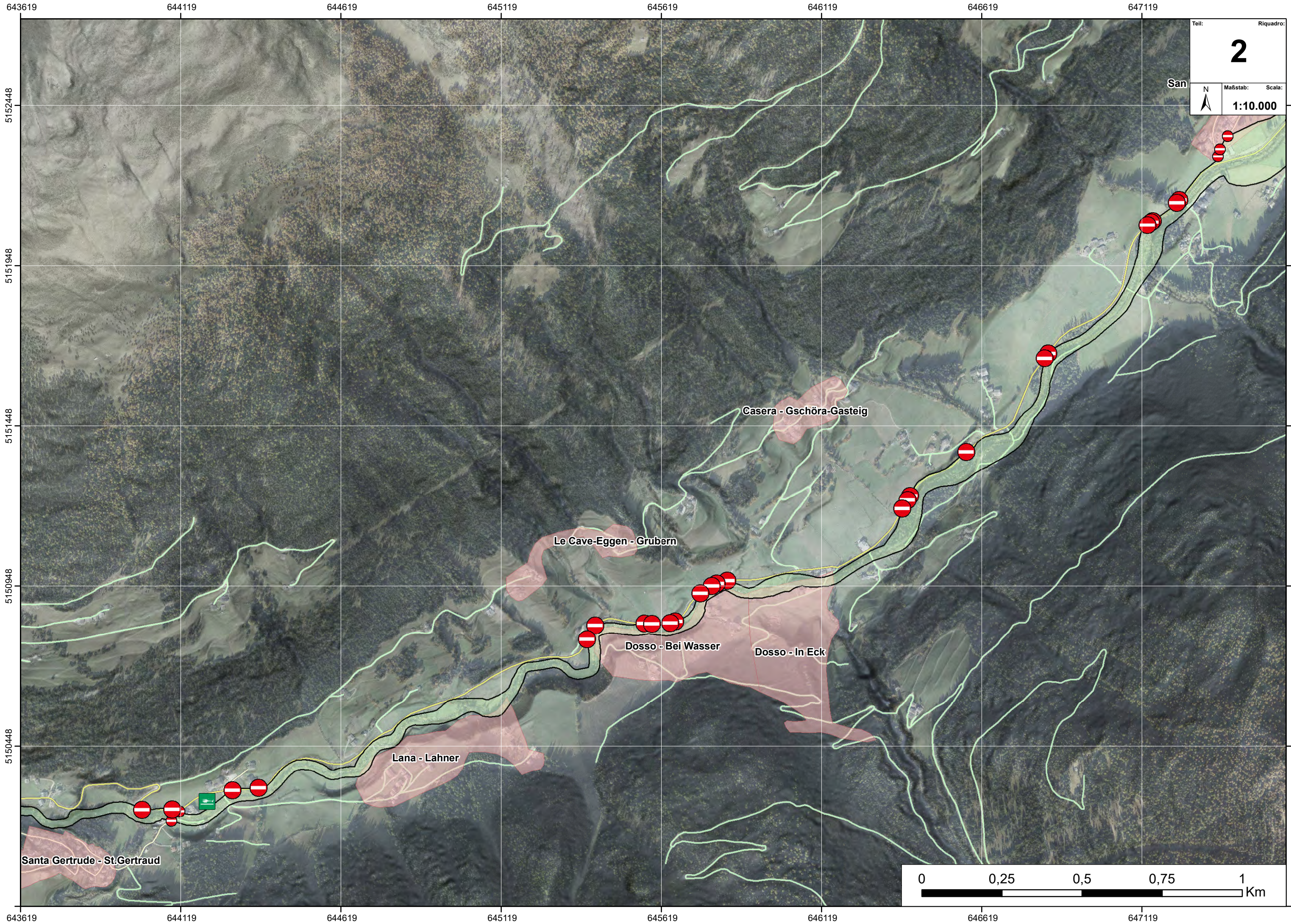
## Risorse fruibili - Ressourcen sicher

-  Area punto di raccolta - Sammelstellen
-  Elisuperfici di soccorso - Hubschrauberlandplätze
-  Aree di ammassamento per i soccorsi - Bereitstellungsräume
-  Aree di ammassamento animali domestici - Notunterkunft Haustiere
-  Aree o strutture di accoglienza ricovero - Notunterkünfte
-  COC - GLS

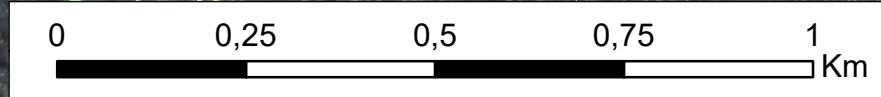
Rete viaria: strade e sentieri – Verkehrsnetz: Straßen und Wege

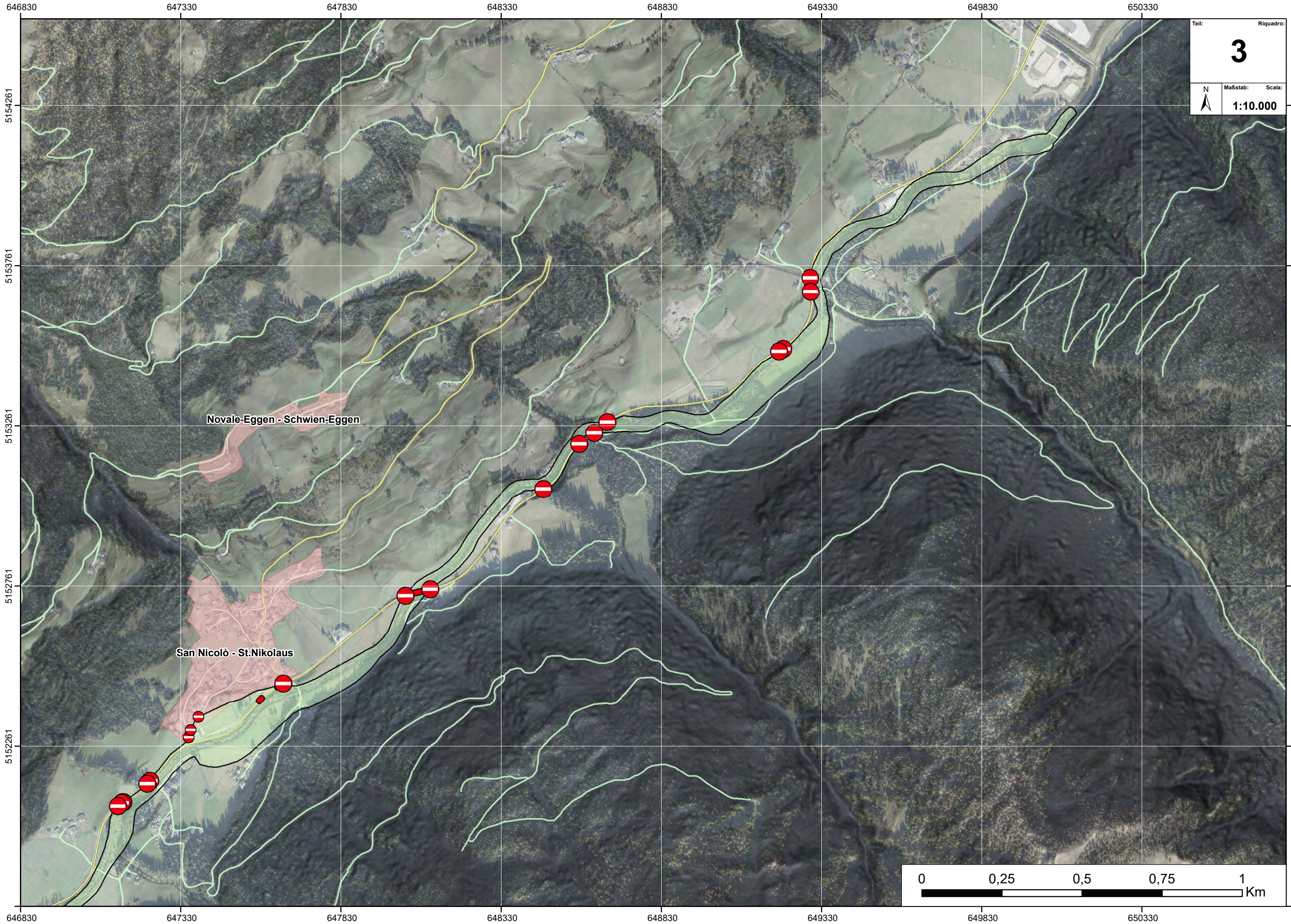
Ortofoto - Orthofoto 2014 – 2015 - 2017





Teil: 2  
Riquadro: 2  
Maßstab: 1:10.000  
Scala: 1:10.000





Teil: Riquadro:  
**3**  
Maßstab: Scala:  
**1:10.000**

Novale-Eggen - Schwien-Eggen

San Nicolò - St. Nikolaus

