




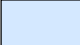


		Rischio Diga - Risiko Stauanlage		Scala-Masstab: 1:65.000	
Diga: Fontana Bianca		Piano di emergenza Notfallplan			
Stauanlage: Weißbrunn		DIRETTIVA DEL PRESIDENTE DEL CONSIGLIO DEI MINISTRI 8 LUGLIO 2014			RICHTLINIE DES PRESIDENTEN DES MINISTERRATES VOM 8. JULI 2014
N.Archivio: 932 - 932A Nr. Archiv:					
Carta operativa di rischio - Einsatzkarte					
Versione Version	Data Datum	Elaborato Bearbeitet	Controllato Kontrolliert	Note Bemerkungen	
1	30.06.2022	ML	RD		






Legenda - Legende

-  Invaso Fontana Bianca - Staubecken Weißbrunn
-  Località - Ortschaft
-  Comuni interessati - Betroffene Gemeinden
-  Comuni - Gemeinden
-  Diga - Damm



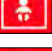


Scenari - Szenarien

-  Collasso - Dambruch






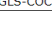
Mobilità - Mobilität

-  Ponti - Brücken
-  Cancelli rete ferroviaria - Sperren Schienen
-  Cancelli stradali A22, S.S., S.P. - Straßen Sperren A22, SS, LS
-  Cancelli stradali S.C. - Straßen Sperren GS
-  Funivie - Seilbahnen

Elementi vulnerabili - Vulnerable Elemente

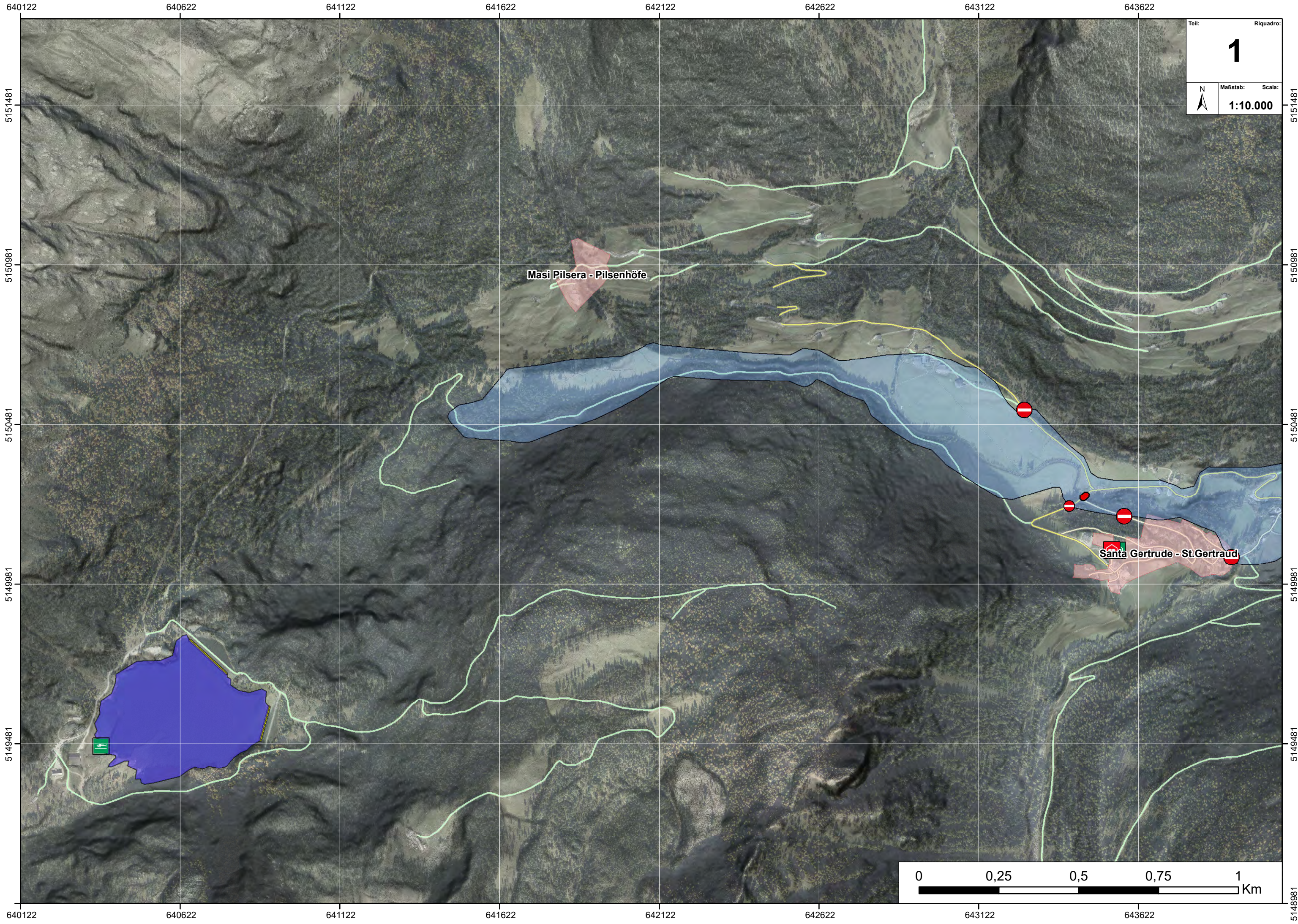
-  Distretto Sanitario - Gesundheitsprengel
-  Cooperativa frutticoltori - Obstgenossenschaft
-  Asili - Kindergarten
-  Scuole - Schulen
-  Case di riposo - Altersheime

Risorse fruibili - Sichere Ressourcen

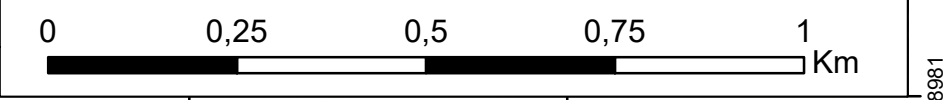
-  Area punto di raccolta - Sammelstellen
-  Elisuperfici di soccorso - Hubschrauberlandeplätze
-  Aree di ammassamento per i soccorsi - Bereitstellungsräume
-  Aree di ammassamento animali domestici - Notunterkunft Haustiere
-  Aree o strutture di accoglienza ricovero - Notunterkünfte
-  COC - GLS

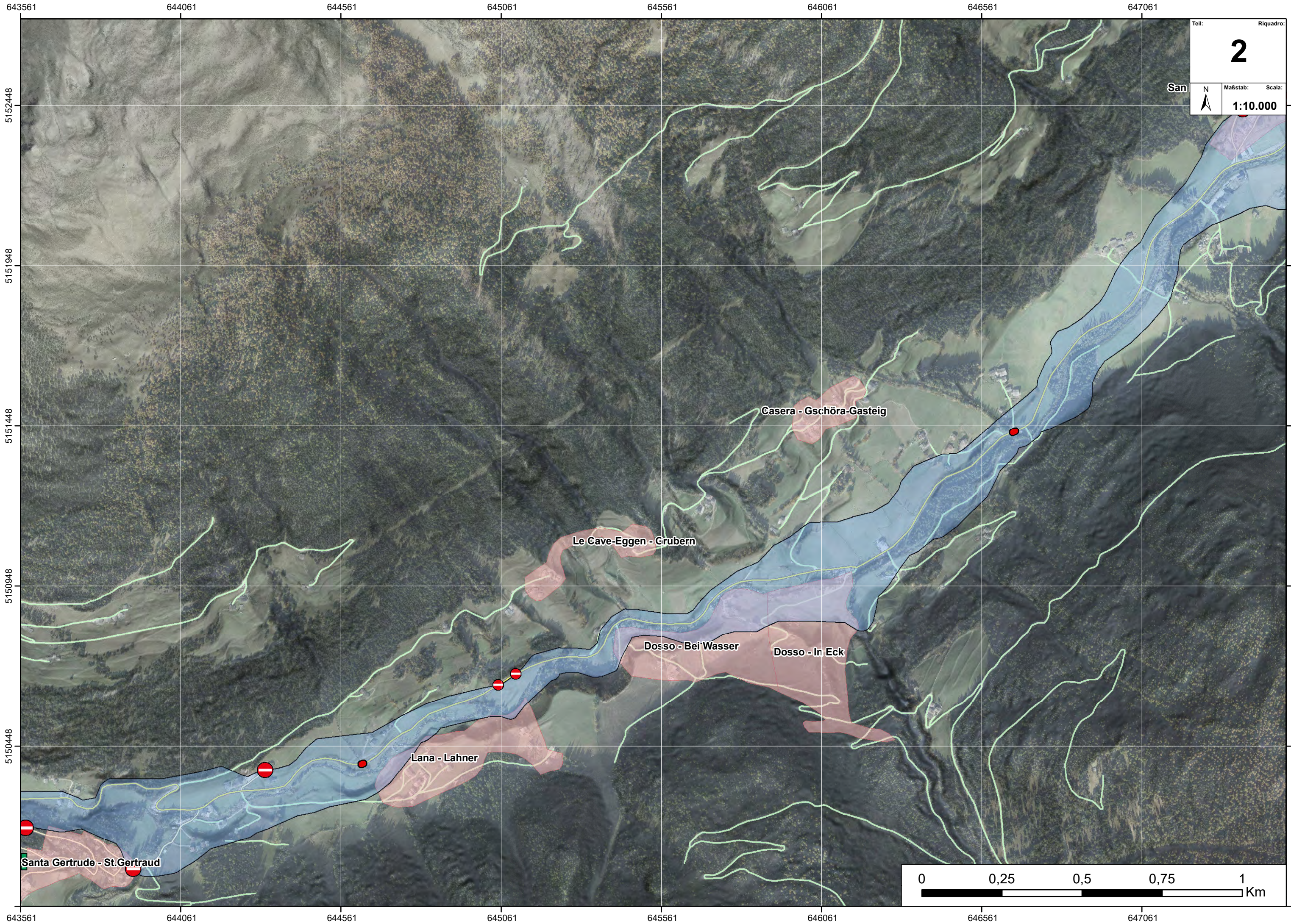
Rete viaria: strade e sentieri - Verkehrsnetz. Straßen und Wege

Carta tecnica vettoriale 2007 (1:10000) - Vektorgrundkarten 2007 (1:10000)



Teil: **1** Riquadro:
Maßstab: 1:10.000 Scala:
N





643561

644061

644561

645061

645561

646061

646561

647061

5152448

5151948

5151448

5150948

5150448

5149948

Teil: Riquadro:
2
San
N
Maßstab: Scala:
1:10.000

5152448

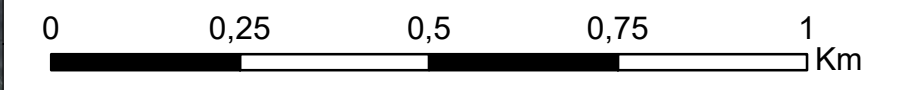
5151948

5151448

5150948

5150448

5149948



Santa Gertrude - St. Gertraud

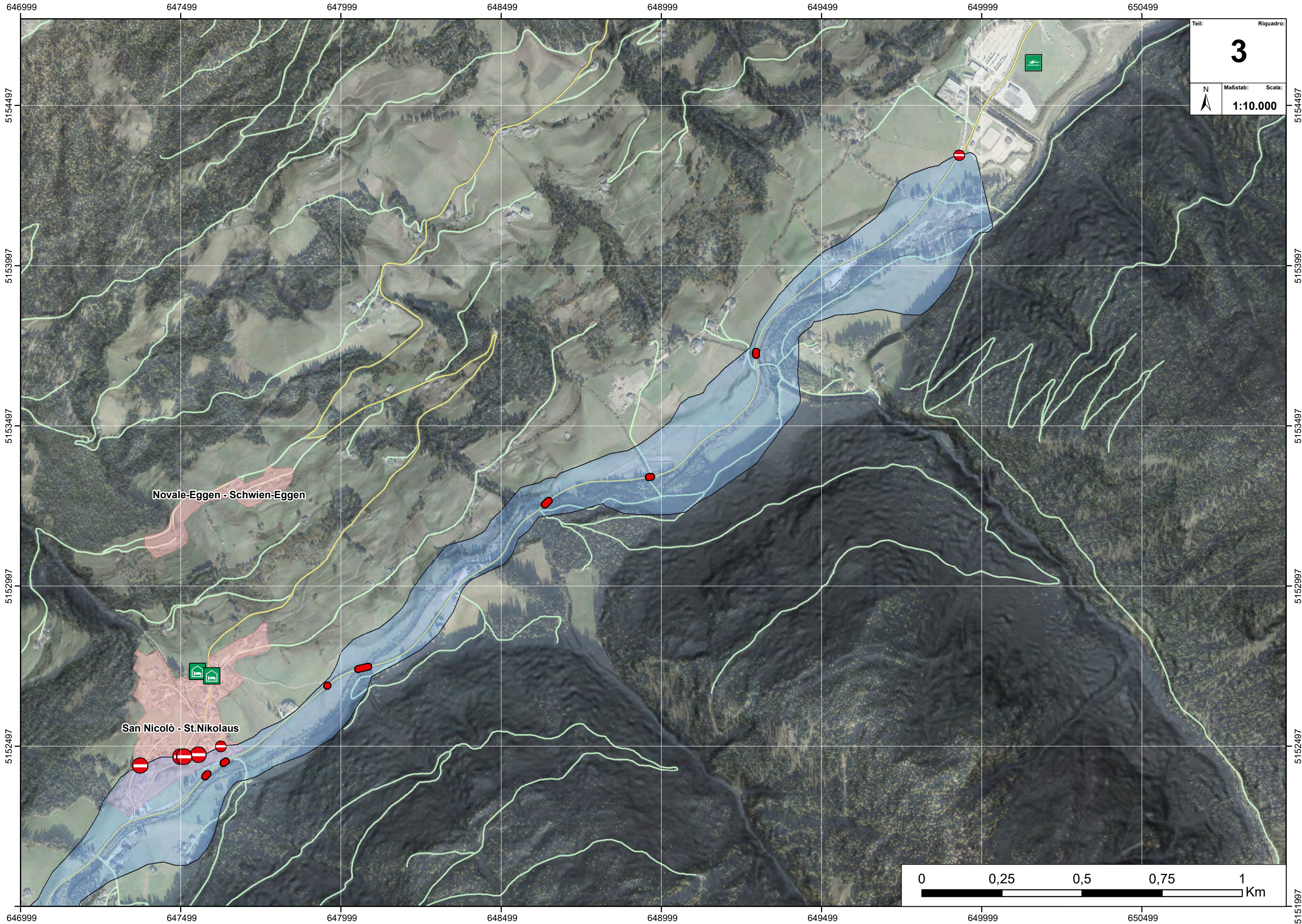
Lana - Lahner

Le Cave-Eggen - Grübern

Casera - Gschöra-Gasteig

Dosso - Bei Wasser

Dosso - In Eck



Teil: **3** Riquadro:
Maßstab: 1:10.000
Scala:

Novale-Eggen - Schwien-Eggen

San Nicolò - St.Nikolaus

