

Rischio idraulico a valle - Talseitiges Hydraulisches Risiko



Diga: **Alborelo**
 Staumauer: **Pankrazer See**
 N.Archivio: **574** Nr. Archiv:

Piano di emergenza

DIRETTIVA DEL PRESIDENTE
 DEL CONSIGLIO DEI MINISTRI
 8 LUGLIO 2014

Notfallplan

RICHTLINIE DES PRÄSIDENTEN
 DES MINISTERRATES VOM
 8. JULI 2014






Scala-Masstab:
1:70.000




Carta operativa di rischio - Einsatzkarte

Versione Version	Data Datum	Elaborato Bearbeitet	Controllato Kontrolliert	Note Bemerkungen
1	30.06.2022	ML	RD	







Legenda - Legende

-  Invaso Alborelo - Staubecken St. Pankrazersee
-  Località - Ortschaft
-  Comuni interessati - Betroffene Gemeinden
-  Comuni - Gemeinden
-  Diga - Damm






Scenari - Szenarien

-  Scarichi di fondo - Grundablass







Mobilità - Mobilität

-  Ponti - Brücken
-  Cancelli rete ferroviaria - Sperren Schienen
-  Cancelli stradali A22 S.S. S.P. - Straßen Sperren A22 S.S. L.S.
-  Cancelli stradali S.C. - Straßen Sperren G.S.
-  Funivie - Seilbahnen
-  Ospedali - Krankenhäuser

Elementi vulnerabili - Vulnerable Elemente

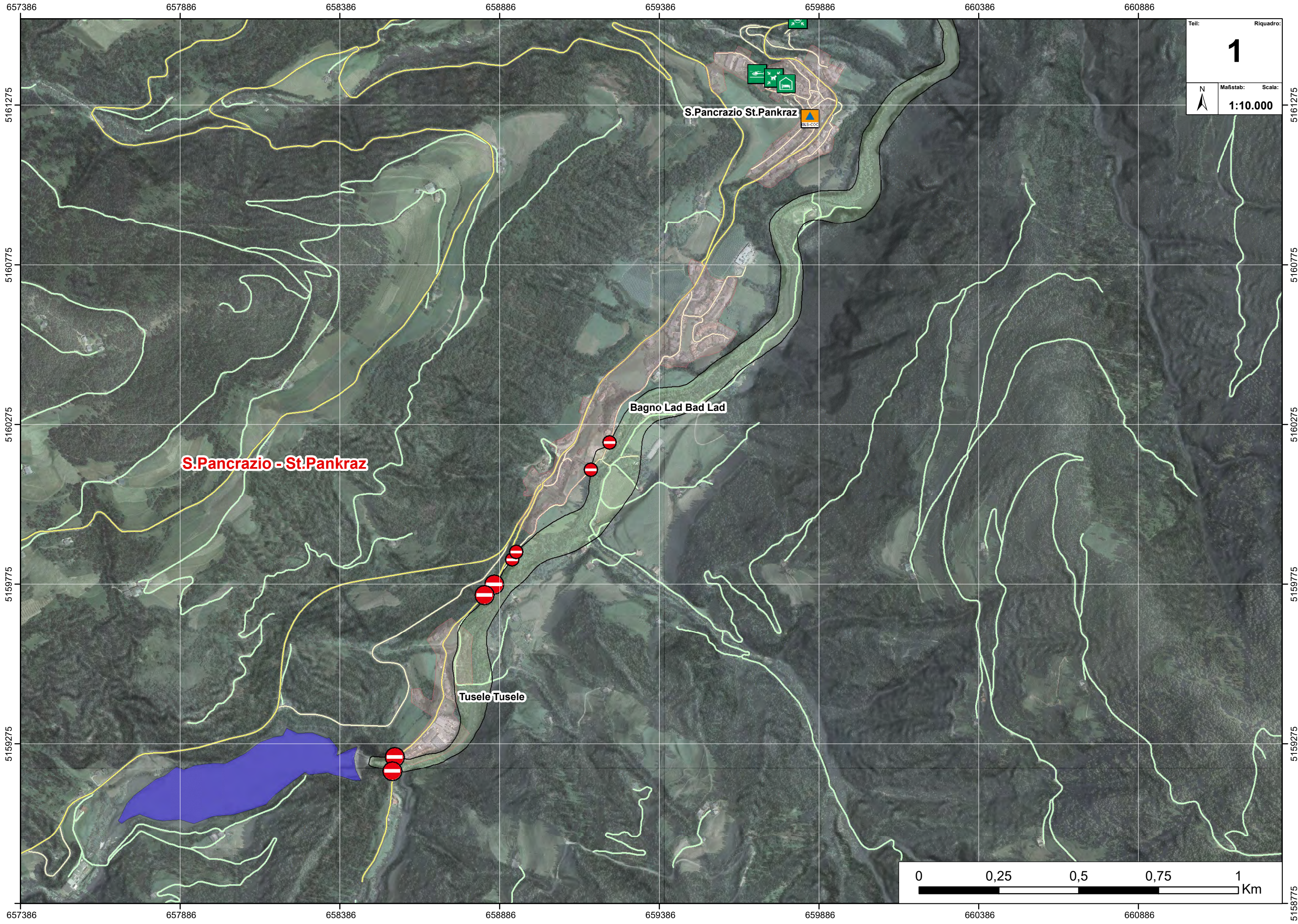
-  Distretto Sanitario - Gesundheitsprengel
-  Cooperativa frutticoltori - Obstgenossenschaft
-  Asili - Kindergarten
-  Scuole - Schulen
-  Case di riposo - Altersheime

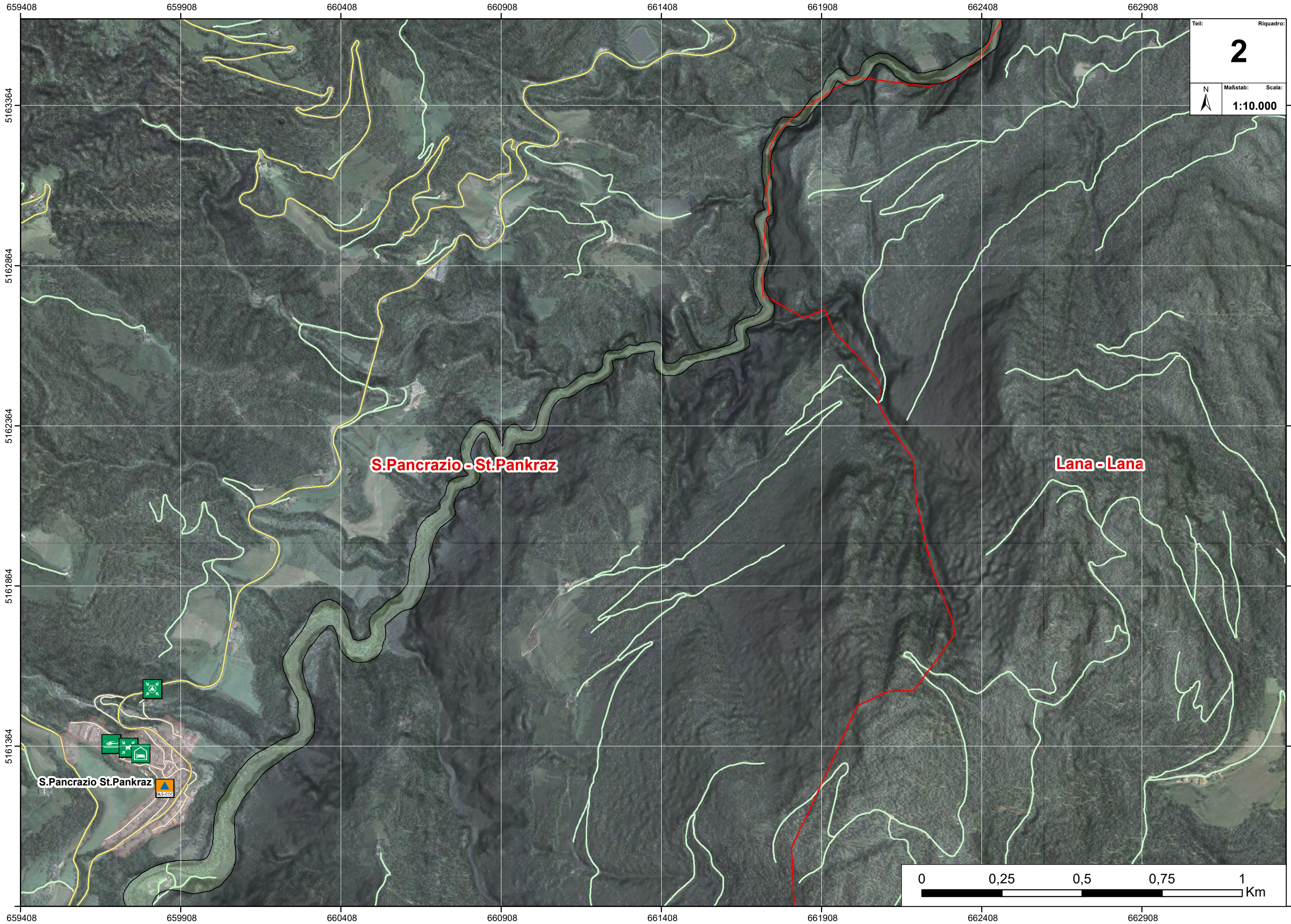
Risorse fruibili - Ressouschen sicher

-  Area punto di raccolta - Sammelstellen
-  Elisuperfici di soccorso - Hubschrauberlandplätze
-  Aree di ammassamento per i soccorsi - Bereitstellungsräume
-  Aree di ammassamento animali domestici - Notunterkunft Haustiere
-  Aree o strutture di accoglienza ricovero - Notunterkünfte
-  COC - GLS

Rete viaria: strade e sentieri – Verkehrsnetz: Straßen und Wege

Ortofoto - Orthofoto 2014 – 2015 - 2017



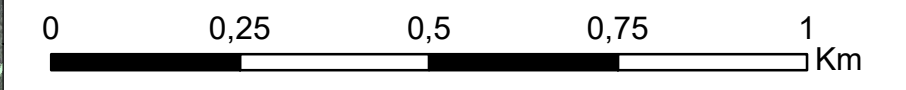


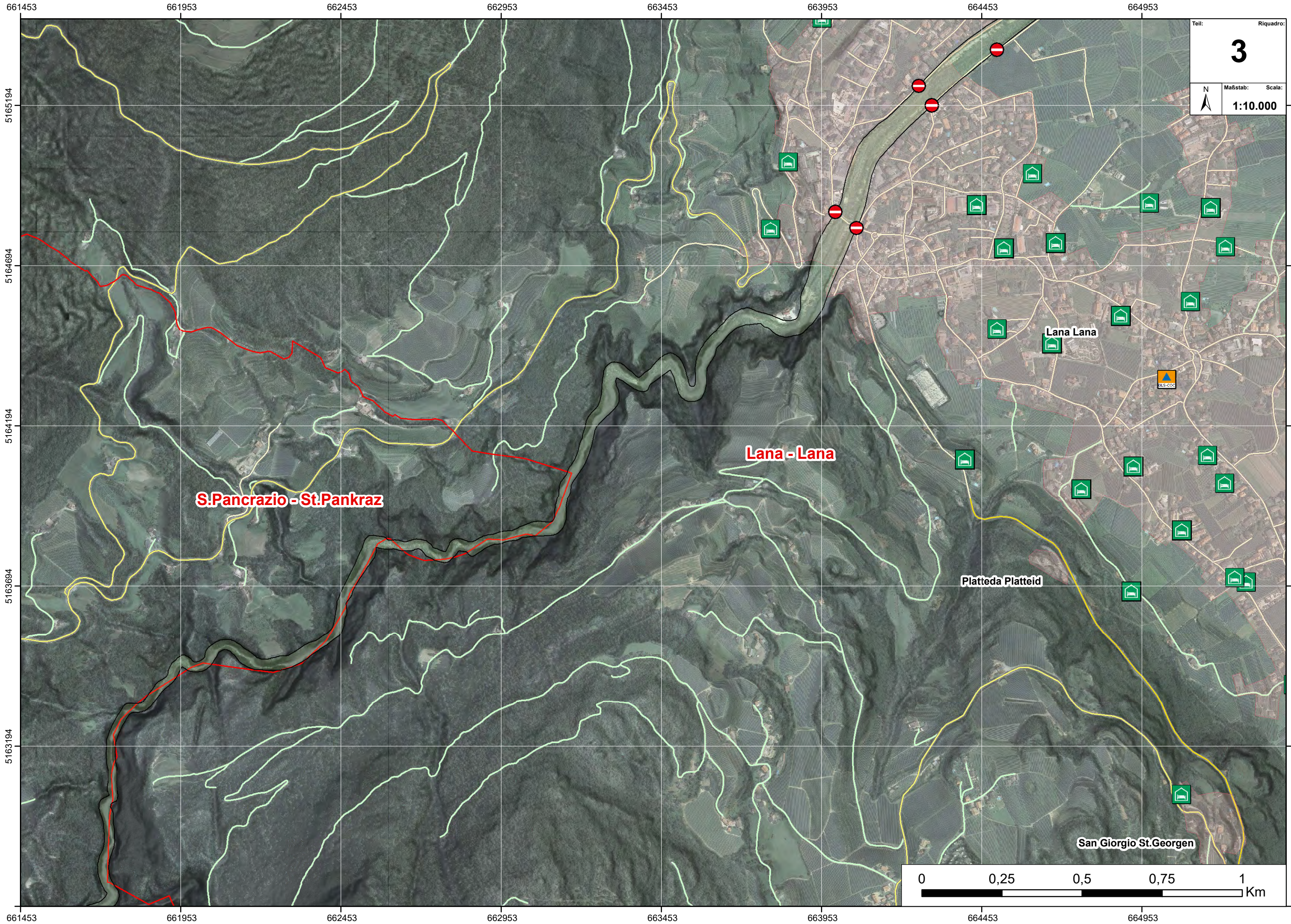
Teil: Riquadro:
2
Maßstab: Scala:
1:10.000

S.Pancrazio - St.Pankraz

Lana - Lana

S.Pancrazio St.Pankraz





661453

661953

662453

662953

663453

663953

664453

664953

5165194

5164694

5164194

5163694

5163194

661453

661953

662453

662953

663453

663953

664453

664953

5165194

5164694

5164194

5163694

5163194

5162694

Teil: Riquadro:
3
N Maßstab: Scala:
1:10.000

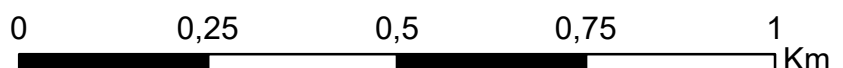
S.Pancrazio - St.Pankraz

Lana - Lana

Platteda Platteid

San Giorgio St.Georgen

Lana Lana



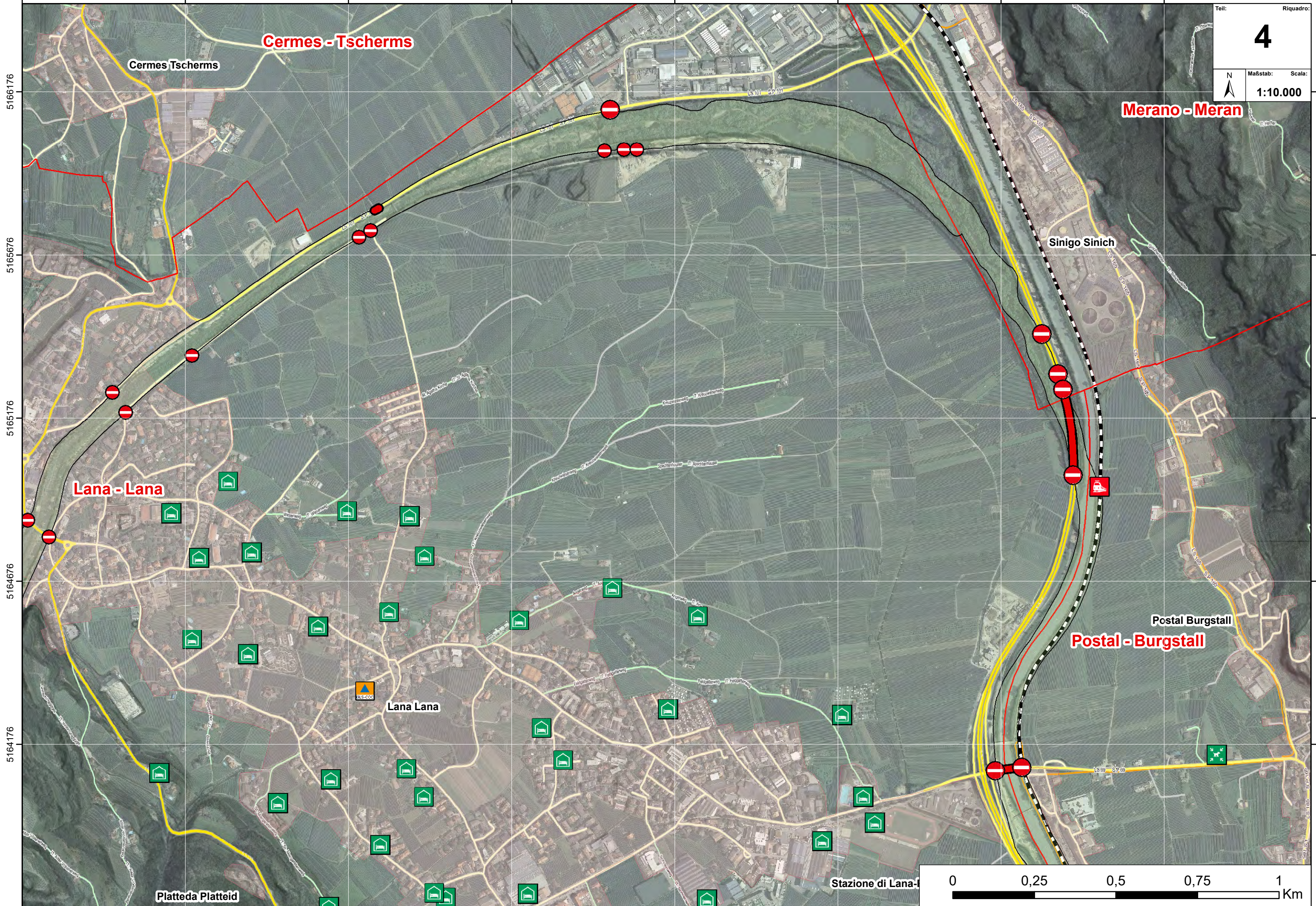
663978 664478 664978 665478 665978 666478 666978 667478

5166176
5165676
5165176
5164676
5164176
5163676

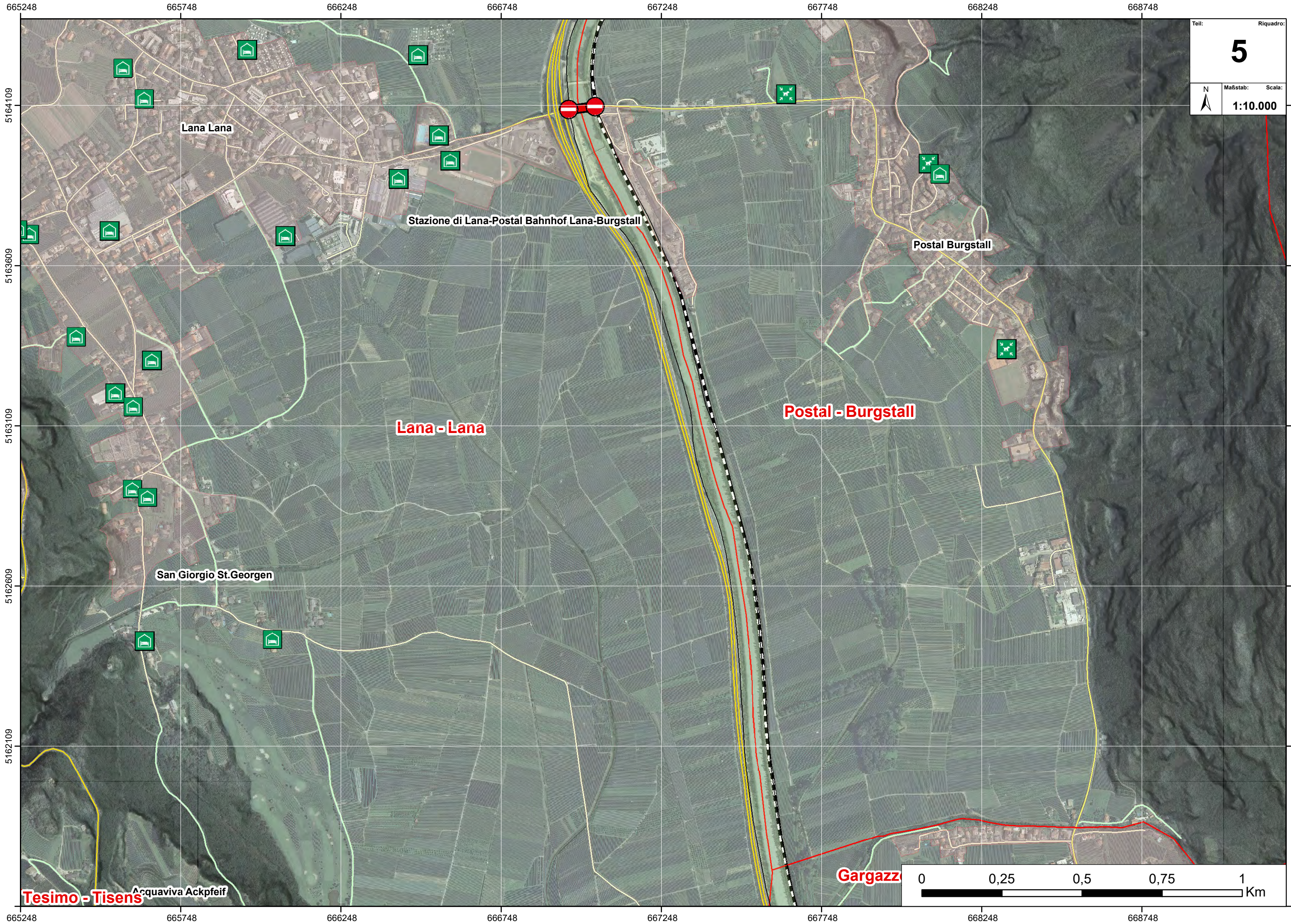
Teil: Riquadro:
4

Maßstab: Scala:
1:10.000

N



663978 664478 664978 665478 665978 666478 666978 667478



Teil: **5** Riquadro:

Maßstab: **1:10.000** Scala:

N

Lana Lana

Stazione di Lana-Postal Bahnhof Lana-Burgstall

Postal Burgstall

Lana - Lana

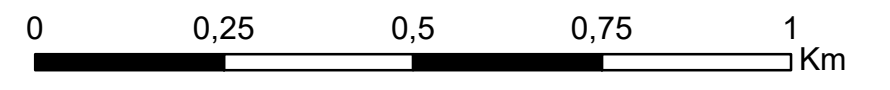
Postal - Burgstall

San Giorgio St. Georgen

Gargazzo

Tesimo - Tisens

Acquaviva Ackpfeif



665248
5164109
5163609
5163109
5162609
5162109
665248

665748
5164109
5163609
5163109
5162609
5162109
665748

666248
5164109
5163609
5163109
5162609
5162109
666248

666748
5164109
5163609
5163109
5162609
5162109
666748

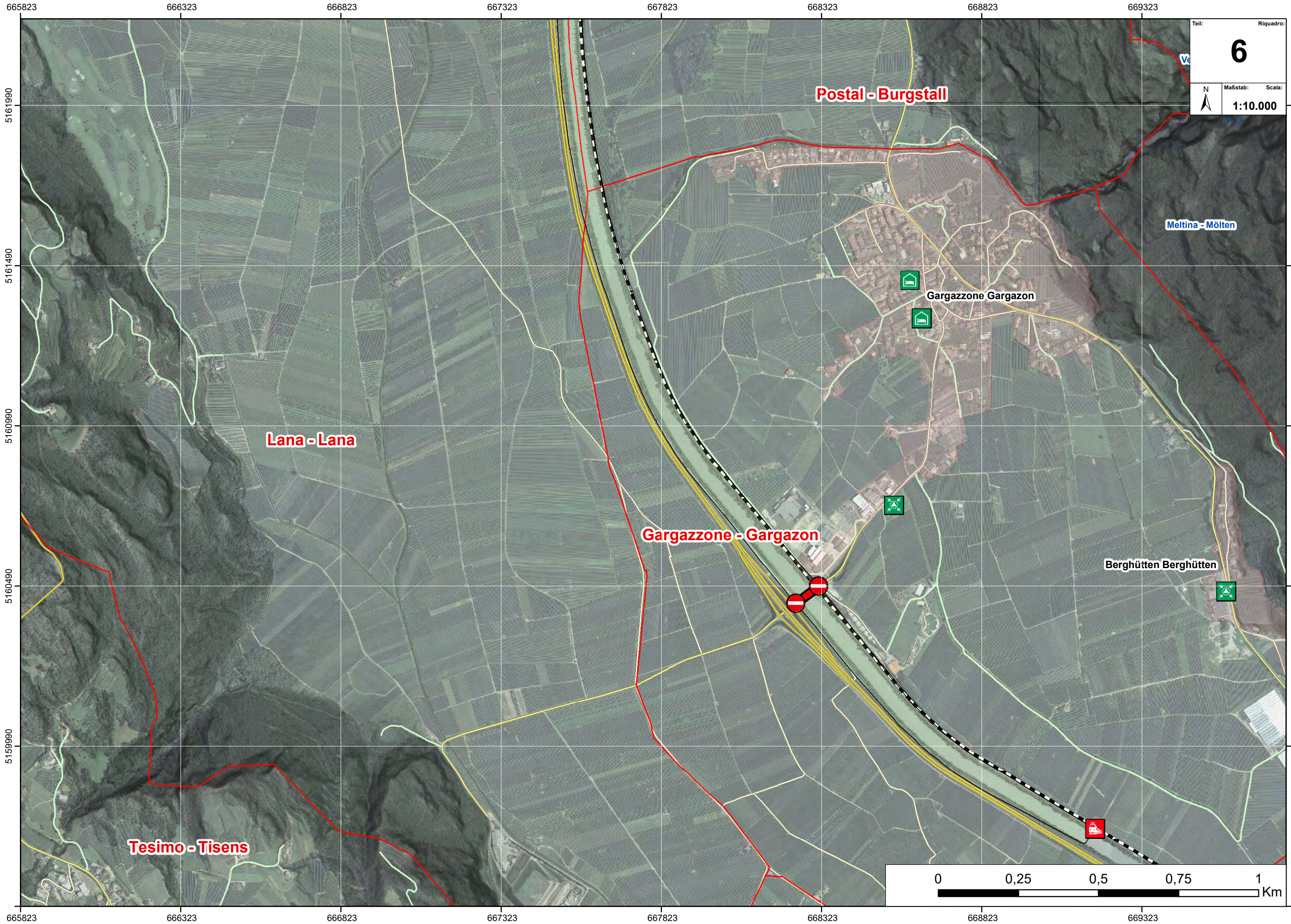
667248
5164109
5163609
5163109
5162609
5162109
667248

667748
5164109
5163609
5163109
5162609
5162109
667748

668248
5164109
5163609
5163109
5162609
5162109
668248

668748
5164109
5163609
5163109
5162609
5162109
668748

5164109
5163609
5163109
5162609
5162109
5161609



Teil: Riquadro: **6**
Maßstab: Scala: **1:10.000**

Postal - Burgstall

Lana - Lana

Gargazzone - Gargazon

Tesimo - Tisens

Gargazzone Gargazon

Berghütten Berghütten

Meltina - Mölten

